



COUNTY GOVERNMENT OF KIAMBU

Department of Municipal Administration & Urban Development

LIMURU MUNICIPALITY

Municipal Annual Development Plan (MADP)

For

FY 2024/2025

August, 2024

Table of Contents

1. INTRODUCTION	4
1.1. Overview	Error! Bookmark not defined.
1.2 Development Plan Preparation Team	Error! Bookmark not defined.
1.3 Municipality background	6
1.3.1 Municipality map and Location	6
1.3.2 Municipality demographic characteristics	6
1.3.3 Economic activities.....	6
1.4 Citizen Forum.....	7
2.0 Annual Development Plan Context	7
2.1 Summary of the main objectives as identified in the 1-year MADP	7
2.2 Overview of the activities already undertaken as per MADP	8
3.0 Investment Prioritization	9
3.1 Urban Board priorities	9
3.2 County government priorities as per the CIDP	10
3.3 Municipality Citizen forum priorities.....	10
Table 2: Citizen Priorities	10
3.4 Consensus on projects prioritized by the municipal board.....	11
Table 3: Consensus Projects	11
3.5 Recommended Projects to be prioritized	12
3.6 Approved Projects by the County Executive Committee	13
4.0 URBAN DEVELOPMENT PLAN AND BUDGET FY 2024 / 2025	14
Table 4: Proposed projects and tentative costs estimate for the Project preparatory, design and implementation	14
4.2 Project Rationale, justification and Eligibility.....	15
Table 5: The rationales and justification of the proposed projects.	15
4.4 Projects' Work Plan	16
4.5 Project preparatory, design and implementation (table 4).....	16
4.6 Gantt chart.....	17
Table 6: Gantt chart	17
5.0 EXPECTED OUTCOMES	18
6.0 IMPLEMENTATION MODALITIES AND TIMEFRAME	19
6.1 Implementation responsibility	19
6.2 Indicate how procurement will be organized	19
6.3 Realistic assessment of what can be completed in the FY and what need to be scheduled for the subsequent FY. The assessment is as reflected in the Gantt chart and Table 7 19	
Table 8: Roles distinction	20
7.0 ANNEXES:	21
Annex 1: Municipality Citizen Forum Minutes	21
Annex 2: Pre-feasibility studies for each proposed project, including the social and environmental checklist (see POM, Vol II, Annex 18	21
Annex 2: Project Screening Checklist of the eight proposed projects	23

Annex 3: Project Eligibility.....	25
Annex 4: Project Identification Screening checklist.....	26
Annex 5: Project Preparation Screening Checklist	29

LIST OF TABLES

Table 1: Urban Board project priorities.....	4
Table 2: Citizen priorities	10
Table 3: Consensus Projects	11
Table 4: Proposed projects and tentative costs estimate	14
Table 5: The rationales and justification of the proposed projects.....	15
Table 6: Gantt chart	17
Table 7: Realistic Implementation assessment.....	11
Table 8: Roles distinction	20

ANNEXES

Annex 1: Municipality Citizen Forum Minutes	21
Annex 2:Pre-feasibility studies for each proposed project,social and environmental checklist	21
Annex 3: Project Screening Checklist of the eight proposed projects	23
Annex 4: Project Eligibility.....	25
Annex 5: Project Identification Screening checklist	26
Annex 6: Project Preparation Screening checklist.....	29

1. INTRODUCTION

1.1. Overview

In compliance with the Urban Area and Cities Act 2011, amended 2019, the municipality Annual Development Plan was prepared to guide development. Categorically, it gives more specific annual rationales and justifications for urban development in the 2024-2025 financial year and it includes the Urban Development Grant (UDG) for the year 2024-2025.

1.2 Development Plan Preparation Team

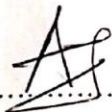
This Annual Development Plan was prepared in a consultative manner by the Municipal Board and a technical team from the department of municipal administration and urban development. The team members comprised of: -

Limuru Municipality
1. Anthony Macharia Kimani- Chairperson
2. Joseph Kimani Munyaka
3. Maryanne Wambui Njoroge
4. Pastor Peter Mungai Wanjiku
5. Eliud Chai Kiarie
6. Dr. Moses Kinuthia
7. Felistus Nyanjiru Ngumi
8. Salome Wainaina-CECM
9. Martin Kang'iri-C. O

Signed by: -

Municipal

Chairperson.....



Date.....

02/08/2024

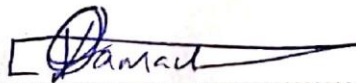
Board

Municipal

Date.....

02/08/2024.

Manager.....

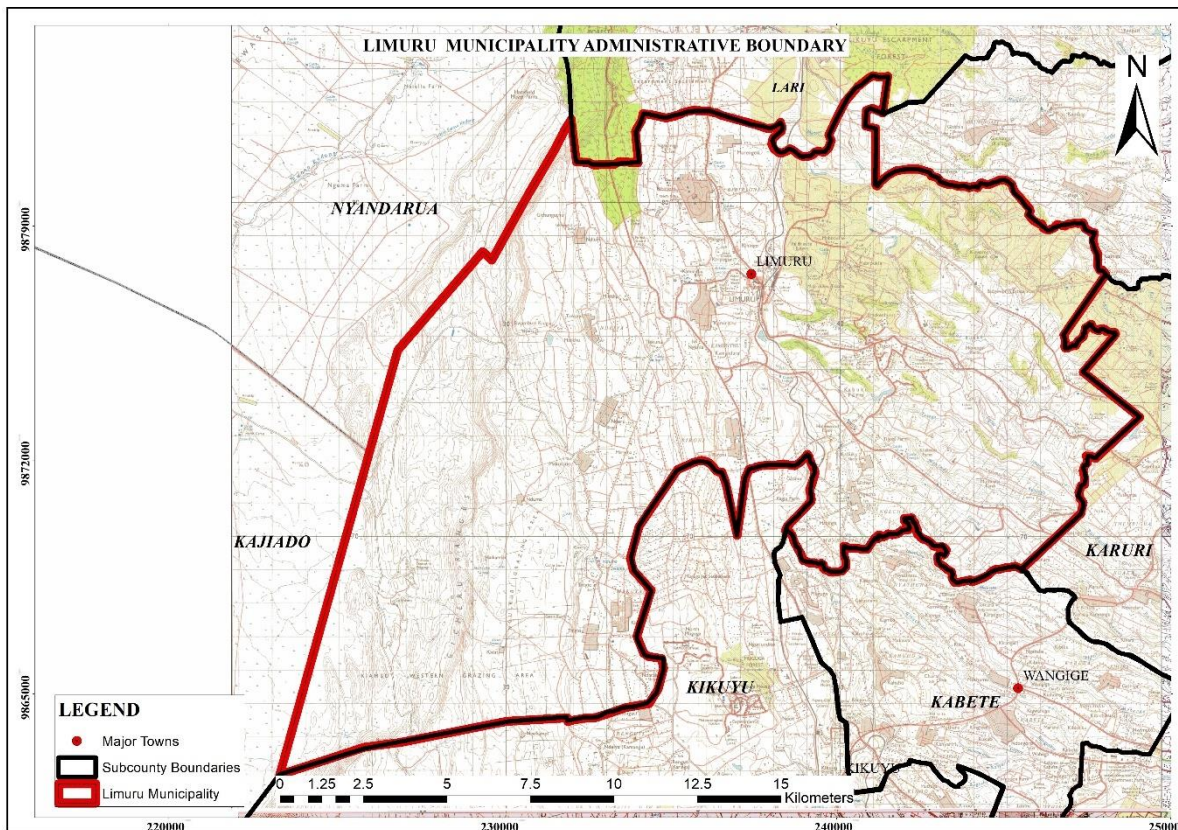


County Technical team comprised of: -

S/No.	Name	Role
1	Peter Karanja	Engineer
2	Erick Matata	Social Safeguards
3	Martin Kung'u	Urban Planner
4	Brian Mwangi	Accountant
5	George Ngaruiya	Industry & trade
6	Ivy Githaiga	Procurement officer
7	Jennifer Kamzeh	County-Department of Occupational Safety and Health.
8	Josephine Wangui	County-National Environment Management Authority
9	Peter Wachira	Monitoring and Evaluation
10	Ann Ng'ang'a	Economist

1.3 Municipality Background

1.3.1 Municipality Map and Location



Source: Department of MAUD, 2024

Limuru municipality is located in the southern portion of Kiambu County and lies directly Northwest of the city of Nairobi which defines its Eastern and South-Eastern boundaries. It borders the city of Nairobi to the south for about 20 km from Nairobi City, Limuru Municipality to the north and Kiambu Municipality to the east.

1.3.2 Municipality demographic characteristics

Limuru Municipality covers an area of 105 KM² with a population of 159,314 as per the 2019 population census (KHPC).

1.3.3 Economic activities

The main economic activities in Limuru town and surrounding areas consist of large-scale farming, horticultural farming, small scale farming and Livestock farming. The town has several manufacturing and processing industries such as Bata Shoe Company, Limuru Polypipes Products, Limuru Milk Processors and many tea factories located outside the town

within the tea plantations. The center of the town is dominated by commercial activities ranging from the open-air market, Jua Kali artisans to other different types of businesses. Residential developments form 35% of land use within the town and surrounding areas. As population within the town increases, land uses such as residential and industries are expected to diversify by 2030.

1.4 Citizen Forum

It is a constitutional requirement that the public be included in any development agenda. Thus, the municipal board organized a public forum on 27th June 2024 at Limuru Home care Hall in Limuru town. Specifically, the forum aimed at both enlightening the public on infrastructural development agenda of the department and seek their development aspirations and proposals. Thus, adequate sensitization and engagement was done. The invitations were through places of worship, word of mouth, public barazas, social media and letters. Various citizen categories attended the public forum as indicated in the minutes of the forum.

After a detailed presentation on the department's urban development agenda, projects prioritization and selection process, the public were organized into random groups through which they articulated the development challenges, the potential solutions and what they felt was most pressing. The public were asked to appoint a chairperson to lead the process and a secretary for note taking. These groups were randomly made by the participants being issued a note with a group number on arrival and after registration. Once the group session was over, a presentation by the group secretary on the issues raised and projects proposed.

On completion of the presentations from the groups, a session on special interest groups and unaddressed pressing issues was conducted. Here, the People with Disabilities were identified, and their views noted, which included the need for universal access in the municipality. Other groups included the youth (under 35 years), women representative among the attendants, residence associations and anyone with an issue they felt was not addressed. Moreover, the forum also had a question and session through which key issues were clarified through appropriate responses.

2.0 Annual Development Plan Context

2.1 Summary of the main objectives as identified in the 1-year MADP

The primary objective of the MADP is to address the urban challenges within the municipalities.

The secondary objectives of the MADP are summarized as:

- i. To allow for allocation of the scarce resources to priority projects and Programmes as determined by stakeholders of the municipality.
- ii. To enhance sustainable urban development and proper infrastructural maintenance.
- iii. To address the development needs for the municipality.
- iv. To give priority to projects to be implemented in the next 5 years as spelt out in the County Integrated Development Plan (CIDP 2023-2027)
- v. To create wealth, improve the livelihoods of the residents of municipality and specifically contribute to the overall municipality growth.

2.2 Overview of the activities already undertaken as per MADP

The projects done as identified in the MADP include:

- i. **Connectivity, Mobility and Accessibility** Upgrading of urban infrastructure including urban cabro/bitumen roads, non-motorized transport (NMT), storm water drainage, Integrated Solar Street Lighting (ISSL), urban markets, sewer reticulation, urban aesthetics/parks and solid waste management.
- ii. **Municipal Solid waste management (MSWM)** Solid waste: collection equipment (garbage tippers), skip bins, collection and waste bins, transfer stations, collection points, Garbage compacting trucks, skip loaders, Backhoes/front loaders. Community sensitization campaigns on improved MSWM.
- iii. **Wastewater and faecal sludge management.** Safe and emptiable public toilets/latrines, community septic tanks, emptying and transportation services and equipment e.g., vacuum trucks, vacuum handcarts, sewer flushing trucks and others
- iv. **Water supply** Community connections (kiosks and storage tanks not exceeding 10m³), water reticulation systems
- v. **Storm water drainage** Urban drainage systems; flood control methods (along existing channels e.g., protection of drainage channels). • Rehabilitation of storm water drainage (drainage must have compliant outfall)
- vi. **Urban social and economic infrastructure** Urban greenery and public open spaces, social retail markets, community halls, childcare facilities.
- vii. **Fire and Disaster Management** Fire control stations and disaster management equipment (firefighting trucks, fire tenders, rehabilitation and/or construction of new firefighting station and facilities).

3.0 Investment Prioritization

Pursuant to section 20 of the UACA 2019 the board of the municipality is mandated to develop and adopt policies, plans, strategies and programmes, and may set targets for delivery of services.

3.1 Urban Board priorities

Table1: Urban Board project priorities

Location(s)/wards	Projects
Ngecha	<ul style="list-style-type: none"> -Installation of cabro/bitumen, Street lighting, and installation of storm water drainage at Hospital area to join the main road, in Tigoni -Installation of cabro/bitumen, Street lighting, and construction of storm water drainage at Ngecha town market center.
Bibirioni	<ul style="list-style-type: none"> - Construction of storm water drainage in Bibirioni.
Limuru East	<ul style="list-style-type: none"> -Installation of cabro/bitumen, Street lighting and construction of storm water drainage market center at Karanjee - Construction of garage sheds at Karanjee
Limuru Central	<ul style="list-style-type: none"> -Installation of cabro/bitumen, Street lighting and construction of storm water drainage at Kwambira-Limuru Town-Manguo
Ndeiya	<ul style="list-style-type: none"> -Installation of cabro/bitumen, Street lighting, and construction of storm water drainage at the market center in Buroti area -Installation of high masts in Buroti area.

3.2 County government priorities as per the CIDP

According to the Kiambu County Integrated Development Plan 2023-2027, the prioritized projects relevant to the department include the following:

- i. Trade, tourism and Industrial Development
- ii. County Roads & Transport that includes but not limited to:
 - a. Ensuring the county is well connected with an efficient, safe and reliable all-weather road network and Bus parks.
 - b. Provide safe, clean energy lighting and fire, disaster and emergency response in the county.
 - c. Provision and maintenance of safe, healthy and efficient green buildings, civil works and rural footbridges
- iii. County Public Works like sewerage reticulation
- iv. County Utilities in areas of need

3.3 Municipality Citizen forum priorities

The public forum led to the proposal of several projects, which the participants felt were impactful in their respective contexts. Thus, the projects in Table 2 were emphasized during the forum:

Table 2: Citizen Priorities

Locations/wards	Citizen priorities
Ngecha	-Installation of cabro/bitumen, Street lighting, and installation of storm water drainage at Hospital area to join the main road, in Tigoni -Installation of cabro/bitumen, Street lighting, and construction of storm water drainage at Ngecha town market center.
Bibirioni	- Construction of storm water drainage in Bibirioni.
Limuru East	-Installation of cabro/bitumen, Street lighting and construction of storm water drainage market center at Karanje

	- Construction of garage sheds at Karanjee
Limuru Central	-Installation of cabro/bitumen, Street lighting and construction of storm water drainage at Kwambira-Limuru Town-Manguo
Ndeiya	-Installation of cabro/bitumen, Street lighting, and construction of storm water drainage at the market center in Buroti area -Installation of high masts in Buroti area.

3.4 Consensus on projects prioritized by the municipal board

After the plenary session through which projects were identified, a consensus development session led to a unanimous agreement on the following projects:

Table 3: Consensus Projects

Location(s)/wards	Consensus Projects
Ngecha	-Installation of cabro/bitumen, Street lighting, and installation of storm water drainage at Hospital area to join the main road, in Tigoni -Installation of cabro/bitumen, Street lighting, and construction of storm water drainage at Ngecha town market center.
Bibirioni	- Construction of storm water drainage in Bibirioni.
Limuru East	-Installation of cabro/bitumen, Street lighting and construction of storm water drainage market center at Karanjee - Construction of garage sheds at Karanjee
Limuru Central	-Installation of cabro/bitumen, Street lighting and construction of storm water drainage at Kwambira-Limuru Town-Manguo
Ndeiya	-Installation of cabro/bitumen, Street

	lighting, and construction of storm water drainage at the market center in Buroti area -Installation of high masts in Buroti area.
--	---

3.5 Recommended Projects to be prioritized

Following thorough scrutiny by the Municipal Board the following projects were prioritized to be implemented.

Location(s)/wards	Recommended Projects
Ngecha	-Installation of cabro/bitumen, Street lighting, and installation of storm water drainage at Hospital area to join the main road, in Tigoni -Installation of cabro/bitumen, Street lighting, and construction of storm water drainage at Ngecha town market center.
Bibirioni	- Construction of storm water drainage in Bibirioni.
Limuru East	-Installation of cabro/bitumen, Street lighting and construction of storm water drainage market center at Karanje - Construction of garage sheds at Karanje
Limuru Central	-Installation of cabro/bitumen, Street lighting and construction of storm water drainage at Kwambira-Limuru Town-Manguo
Ndeiya	-Installation of cabro/bitumen, Street lighting, and construction of storm water drainage at the market center in Buroti area -Installation of high masts in Buroti area.

3.6 Approved Projects by the County Executive Committee

After a detailed presentation to the County Executive Committee which was followed by a Municipal Board meeting the following projects were finally approved for funding and implementation:

Location(s)/wards	Approved Projects
Ngecha	<ul style="list-style-type: none"> -Installation of cabro/bitumen, Street lighting, and installation of storm water drainage at Hospital area to join the main road, in Tigoni -Installation of cabro/bitumen, Street lighting, and construction of storm water drainage at Ngecha town market center.
Bibirioni	<ul style="list-style-type: none"> - Construction of storm water drainage in Bibirioni.
Limuru East	<ul style="list-style-type: none"> -Installation of cabro/bitumen, Street lighting and construction of storm water drainage market center at Karanjee - Construction of garage sheds at Karanjee
Limuru Central	<ul style="list-style-type: none"> -Installation of cabro/bitumen, Street lighting and construction of storm water drainage at Kwambira-Limuru Town-Manguo
Ndeiya	<ul style="list-style-type: none"> -Installation of cabro/bitumen, Street lighting, and construction of storm water drainage at the market center in Buroti area -Installation of high masts in Buroti area.

4.0 URBAN DEVELOPMENT PLAN AND BUDGET FY 2024 / 2025

Table 4: Proposed projects and tentative costs estimate for the Project preparatory, design and implementation

Table1: Municipal Development Budget FY 2024/2025								
#	Activity*)	Timeframe		Budget				
		Start date	End Date	UDG (KSH)	Other-1 County Funding (KSH)	Other-2	Total	
1.	Urban Improvement Project inclusive of cabro/ bitumen Roads, Non-Motorized Transport, Storm Water Drainage, Street lighting, Market shades, commercial auxiliary shops bus parks, urban greenery & beatification in Bibirioni, Ndeiya, Ngecha, Limuru East & Limuru Central	Preparatory			-	-	-	
		Design				-	-	
		Implementation			40,983,250	5,000,000	-	
		Total						45,983,250

4.2 Project Rationale, justification and Eligibility

Table 5: The rationales and justification of the proposed projects.

Prioritized Projects	Rationale	Justification	Eligibility
Urban Improvement Project inclusive of cabro/bitumen Roads, Non-Motorized Transport, Storm Water Drainage, Street lighting, Market shades, commercial auxiliary shops bus parks, urban greenery & beatification in Bibirioni, Ndeiya, Ngecha, Limuru East & Limuru Central	The prevalence of motorized mobility, conflict of space use between the pedestrians and motorists	Free flow of people and goods is good for economic growth. A pedestrian town is a healthy and cohesive one.	Economic development shall be enhanced by better access and flow of traffic.

Detailed Projects Rationale and Justification

The proposed development was screened against the following set eligibility criteria.

1. The project cost is as per the budget and the Kenya Urban Support Program Operations Manual.
2. The project promotes Integration
3. That the project is not fragmented.
4. The project to be completed and financed within one financial year.
5. The project shall not lead to displacement of more than 200 people or 20 business enterprises.
6. That the project must be within the municipality.
7. That the project is impactful; socially and economically.
8. That the project should not cause irreversible impacts on environmental resources, natural habitat, cultural resources or cause immitigable occupational or health risks.
9. That the project does not entail acquisition of land for its development and therefore displacing individuals, families or business from land currently occupied.

4.4 Projects' Work Plan

The work plan shall be as indicated in Table 6.

4.5 Project preparatory, design and implementation (table 4)

The project preparatory, design and implementation shall be costed as indicated in Table 4.

4.6 Gantt chart

Table 6: Gantt chart

#	Activity*)												
		JUL	AUG	SEP	OCT	NOV	DEC	JAN	FEB	MAR	APR	MAY	JUN
1.	Urban Improvement Project Preparatory, design & inclusive of cabro/ bitumen Roads, procurement												
	Non-Motorized Transport, Storm Water Drainage, Street lighting, Market shades, commercial auxiliary shops bus parks, urban greenery & beatification in Bibirioni, Ndeiya, Ngecha, Limuru East & Limuru Central												

5.0 EXPECTED OUTCOMES

The prioritized projects by the municipal board, county and the citizen forum happen to be in synch thus geared towards common results as described below.

- i. **Economic growth and development**-The economic well-being of the municipalities will be enhanced through provision of job opportunities and economic productivity. This will lead to expansion of local industries and businesses and foster improved standards of living for urban residents.
- ii. **Infrastructure development**-This will be realized due to upgrading of transportation systems and networks (roads, public transit, etc.). Through proper planning and provision of service ducts there shall be expanded access to utilities (electricity, water, sanitation) and Improvement of public facilities such as (schools, hospitals, parks, etc.)
- iii. **Social benefits**-There shall be increased access to education and healthcare services, greater social and cultural integration and reduced poverty and inequality within Kiambu County.
- iv. **Environmental sustainability**-Implementation of the prioritized projects in the municipalities will ensure more efficient use of land and other scarce resources, reduce urban sprawl due to extreme levels of urbanization in the county and protection of green spaces. In order to ensure environmental sustainability, the implemented projects will adopt and adhere to sustainable infrastructure and technology.
- v. **Improved quality of life**-While addressing climate resilience and environmentally safe projects the urban environment will be Safe and more livable while ensuring access to affordable housing and reduce congestion and pollution in the urban zones.

6.0 IMPLEMENTATION MODALITIES AND TIME FRAME

6.1 Implementation responsibility

The Municipality shall be fully responsible for the implementation of the proposed projects. The project implementation team shall;

6.2 Indicate how procurement will be organized

Procurement shall be undertaken according to the Public Procurement and Disposal Act of 2015. The process shall include the advertisement of tenders by the municipality in a National circulation Newspaper, evaluated by experts before awards are made.

6.3 Realistic assessment of what can be completed in the FY and what need to be scheduled for the subsequent FY. The assessment is as reflected in the Gantt chart and Table 7

#	Activity*)	2024/2025						2025/2026							
		JUL-DEC		JAN	FEB	MAR	APR	MAY	JUN	JUL	AUG	SEP	OC	NOV	DEC
1.	Urban Improvement Project inclusive of cabro/bitumen Roads, Non-Motorized Transport, Storm Water Drainage, Street lighting, Market shades, commercial auxiliary shops bus parks, urban	Preparatory, design and procurement													
	Implementation														

greenery & beautification in Bibirioni, Ndeiya, Ngecha, Limuru East & Limuru Central																			
--	--	--	--	--	--	--	--	--	--	--	--	--	--	--	--	--	--	--	--

The roles of the County government and the urban board shall be as stated in table 8

Table 8: Roles distinction

County Government	Urban Board/Municipality
CPCT	Procurement
Transfer of functions	Form a project implementation team consisting of a Surveyor, Spatial Planner, Public works, architect, Engineer, social safeguards, environmentalist Accountant, finance officer, economist
Capacity building	Project supervision
CPCT	Monitoring and evaluation

7.0 ANNEXES:

Annex 1: Municipality Citizen Forum Minutes

Annex 2: Pre-feasibility studies for each proposed project, including the social and environmental checklist (see POM, Vol II, Annex 18

Annex 3: Public Participation Photos.

Public Participation Photos



Source: Limuru Municipality Public Participation Forum, 2024.

Annex 2: Project Screening Checklist of the Proposed Projects

<p><u>PROPOSED PROJECT/SCREENING CRITERIA</u></p>	<p>Urban Improvement Project inclusive of cabro/ bitumen Roads, Non-Motorized Transport, Storm Water Drainage, Street lighting, Market shades, commercial auxiliary shops bus parks, urban greenery & beatification in Bibirioni, Ndeiya, Ngecha, Limuru East & Limuru Central</p>
<p>Project Cost</p>	<p>Project cost is as per the budget and the Kenya Urban Support Program Operations Manual.</p>
<p>Integration and non-Fragmentation of projects e.g. road should have NMT, drainage line, streetlight, sewer line (At least 9m road corridor)</p>	<p>Majority of Project area has enough corridor to accommodate all facilities i.e Walkways, cycle lanes, streetlights). Its completion will also enhance interconnectivity with the existing road networks</p>
<p>Project must not lead to displacement of more than 200 people or 20 business enterprises</p>	<p>Project does not lead to displacement of people</p>
<p>Project must strictly be in an urban set up</p>	<p>Project is in an urban set up</p>
<p>Level of impact of the project</p>	<p>Level of impact of the project very high</p>

<p>Whether the project if implemented could lead to irreversible impacts on environmental resources, natural habitat, cultural resources or cause immitigable occupational or health risks.</p>	<p>Project if implemented could not lead to irreversible impacts on environmental resources, natural habitat, cultural resources or cause immitigable occupational or health risks.</p>
<p>Whether the project require acquisition of land for its development</p>	<p>Majority of the Project area does not require acquisition of land for its development</p>

Annex 3: Project Eligibility

The projects selected meet the requisite criteria, in terms of eligibility, minimum project size (USD 500,000), need to complete the project(s) within one FY (no partial funding), and the social and environmental screening as detailed in Table 4 below:

Table 4: Project Eligibility Matrix						
No.	Name of the Project	Included in the MADP	UDG Eligibility	Minimum Project cost Kshs	Time frame	Social and environmental screening
1.	Urban Improvement Project inclusive of cabro/ bitumen Roads, Non-Motorized Transport, Storm Water Drainage, Street lighting, Market shades, commercial auxiliary shops bus parks, urban greenery & beatification in Bibirioni, Ndeiya, Ngecha, Limuru East & Limuru Central	Yes	Yes (Menu item 4)	50,000,000	12 months	Yes

Annex 4: Project Identification Screening Checklist

Name of the project:	Urban Improvement Project inclusive of cabro/ bitumen Roads, Non-Motorized Transport, Storm Water Drainage, Street lighting, Market shades, commercial auxiliary shops bus parks, urban greenery & beatification in Bibirioni, Ndeiya, Ngecha, Limuru East & Limuru Central		
Location of project:	Limuru Municipality		
Brief description of the project:	Urban Improvement Project inclusive of cabro/ bitumen Roads, Non-Motorized Transport, Storm Water Drainage, Street lighting, Market shades, commercial auxiliary shops bus parks, urban greenery & beatification.		
PROJECT IDENTIFICATION STAGE - PRIOR TO DETAILED PROJECT DESIGN			
Questions to be answered (boxes to be ticked) prior to projects being added to the shortlist or included in a plan or budget:	NO	YES	MAYBE
Assess possible adverse environmental impact	✓		
1. Could the project lead to irreversible environmental impacts for the beneficiaries of the project or for third parties?	✓		
2. Could the project If implemented have a negative and irreversible Impact on the natural habitat?	✓		
3. Could the project If implemented have a negative Impact on any cultural resources?	✓		
4. Is there scope for any concerns that the project, during implementation, or once completed, may cause unmitigable	✓		

	serious occupational or health risks?			
Assess possible adverse social impact		✓		
5.	Does the project require physical displacement of households?	✓		
6.	Does the project require economic displacement of more than 200 persons?	✓		
7.	Is the project likely to create or exacerbate conflict within communities or neighboring counties?	✓		
8.	Is there a possibility that the project would have significant negative impact on vulnerable and/or marginalized and/or indigenous groups?	✓		
9.	Does the project require acquisition of land?	✓		
	<ul style="list-style-type: none"> • If any of the questions 1 to 8 above is answered with ‘Yes’, the project can NOT be funded under UDG - and should not progress to a detailed design phase. • If question 9 is answered with ‘yes’, special procedures need to be follow as outlined in this POM • For every question answered with ‘Maybe’ the situation need to be further investigated before taking a decision to go for full design and before 	✓		

	<p>including it in any budget for UDG funding.</p> <ul style="list-style-type: none"> Projects for which all answers 1-9 are 'No' - could go for detailed design. 			
	<p>Filled by:</p> <p>Name: _____</p> <p>Position: _____Municipal Roads Engineer_____</p> <p>Date : ____/____/____</p>	<p>Signature:</p>		
	<p>Verified by:</p> <p>Name: _____</p> <p>County social and environmental safeguards officer</p> <p>Date : ____/____/____</p>	<p>Signature:</p>		

Annex 5: Project Preparation Screening Checklist

Name of the project:		Urban Improvement Project inclusive of cabro/ bitumen Roads, Non-Motorized Transport, Storm Water Drainage, Street lighting, Market shades, commercial auxiliary shops bus parks, urban greenery & beatification in Bibirioni, Ndeiya, Ngecha, Limuru East & Limuru Central	
Location of project:		Limuru Municipality	
Brief description of the project		Urban Improvement Project inclusive of cabro/ bitumen Roads, Non-Motorized Transport, Storm Water Drainage, Street lighting, Market shades, commercial auxiliary shops bus parks, urban greenery & beautification.	
#	Answer if the Project?	Tick	one
		Yes / No	
Environmental Impacts			
No		Yes	
1.	Adversely affect natural habitats nearby, including forests, rivers or wetlands?		✓
2.	Require large volumes of construction materials (e.g. gravel, stone, water, timber, firewood)?		✓
3.	Use water during or after construction, which will reduce the local availability of groundwater and surface water?		✓
4.	Affect the quantity or quality of surface waters (e.g. rivers, streams, wetlands), or groundwater (e.g. wells, reservoirs)?		✓
5.	Be located within or nearby environmentally sensitive areas (e.g. intact natural forests, mangroves,		✓

	wetlands) or threatened species?		
6.	Lead to soil degradation, soil erosion in the area?		✓
7.	Create waste that could adversely affect local soils, vegetation, rivers and streams or groundwater?		✓
8.	Create pools of water that provide breeding grounds for disease vectors (for example malaria or bilharzia)?		✓
9.	Involve significant excavations, demolition, and movement of earth, flooding, or other environmental changes?		✓
10.	Affect historically important or culturally important site nearby?		✓
11.	Require land for its development, and therefore displace individuals, families or businesses from land that is currently occupied, or restrict people's access to crops, pasture, fisheries, forests or cultural resources, whether on a permanent or temporary basis?		✓
12.	Result in human health or safety risks during construction or later?		✓
13.	Involve inward migration of people from outside the area for use of services or other purposes?		✓
14.	Increase tension/ conflict or disputes among or within communities?		✓
15.	Affect indigenous people, or be located in an area occupied by indigenous people?		✓
16.	Be located in or near an area where there is an important historical, archaeological or cultural heritage site?		✓
17.	Disposal of bush clearance residue may cause spreading of invasive species?		✓
18.	Has potential to introduce a non-native animal or plant species?		✓
19.	Involve directly or indirectly handling of veterinary drugs and vaccines?		✓

Social Impacts Assessment			
20.	Does the project require acquisition of land?		✓
21.	Does the project require physical displacement of households?		✓
22.	Does the project require economic displacement of persons (less than 200 persons)?		✓
23.	Is the project likely to create or exacerbate conflict within communities or neighboring counties?		✓
24.	Is there a possibility that the project would have significant negative impact on vulnerable and/or marginalized and/or indigenous groups?		✓
25.	Result in a significant change/loss in livelihood of individuals?		✓
26.	Cause increased settlement or degradation of surrounding areas?		✓
27.	Adversely affect the livelihoods and /or the rights of women?		✓
Public Participation and Consultations and Grievance Redress Mechanisms			
28.	Has not extensively consulted and included beneficiaries and project affected persons in the selection, planning and project benefits?		✓
29.	Maintenance and management responsibilities have not been defined and accepted by concerned parties?		✓
30.	Has setup Grievance Redress Mechanisms?	√	

<p>Filled by:</p> <p>Name : _____ Position : _____Municipal Roads Engineer_____</p> <p>Date: _____</p>	<p>Signature:</p>
<p>Verified by:</p> <p>Name: _____</p> <p>County Social and Environmental Safeguards officer</p> <p>Date: _____</p>	<p>Signature:</p>

Climate Change Resilience Check List

ANNEX 13: CHECKLIST FOR RESILIENT URBAN INFRASTRUCTURE DURING PLANNING, DESIGN AND BEFORE COMMENCEMENT STAGE

PROJECT PLANNING, DESIGN AND BEFORE COMMENCEMENT STAGES			
Questions to be answered at planning, design stages and before commencement of construction		YES	NO
1	Is the Project included in the County Integrated Development Plan (CIDP)?		
2	Is the Project included in the Urban Integrated Development Plan (IDeP)?		
3	Has a site-specific Project Report been completed, describing site specific environmental and social impact assessment, NEMA approval and license is obtained before commencement of works?		
4	Was the Public consulted during project planning and design?		
5	Were environmentally sensitive areas identified and included in the Project Report and any potential impacts detailed and mitigated?		
6	Is the project located outside of riparian zones (as per Water Act 2016), or, when unavoidable, measures are included to enhance riparian corridors or is a crossing?		
7	Has the Environmental Impact Assessment (EIA) or Project Report been prepared by a registered expert?		
8	Were the following climate change projections integrated into the project design?		
	<ul style="list-style-type: none"> All roof/site/road/storm drainage calculations have applied an appropriate climate change factor, based on regional rainfall intensity projections and project lifetime. 		
	<ul style="list-style-type: none"> Maximum temperatures for material specification have incorporated climate change projections. This is most relevant for roads, in the specification of pavement materials. Other materials specified (incl. plastics) should consider extreme surface temperatures in their specification. 		
	<ul style="list-style-type: none"> Maximum temperatures for structural design have incorporated climate change projections. Structures could include buildings under urban economic and social infrastructure and disaster risk management. 		
	<ul style="list-style-type: none"> Sea-level rise – all infrastructure is above the sea-level with climate change or protection has been designed 		
	Does the EIA (Project Report) highlight these climate change risks and details relevant to climate projections within the 'climate change vulnerability assessment'?		
9	Were the relevant design codes and guidelines for Kenya applied in the design of the project (or where not available Euro codes or other		

	international guidelines), including other relevant design codes for structural resilience and included in project design report?		
10	Is the ultimate discharge point of all roof/site/road/storm drainage to an existing watercourse or drain as identified in project report and design?		
11	Do the designs and drawings illustrate incorporation of universal access elements in line with existing design guidelines and standards?		
12	Do the designs and drawings illustrate incorporation of Green Infrastructure elements in line with existing design guidelines and standards.		
13	Is there evidence of gender and inclusion considerations in project as well as mitigation measures in the social impact assessment in the Project Report?		
14	Were the project designs and drawings prepared and signed off by a Registered Professional Engineer/Registered Architect?		
15	Is the project fully costed, including contingency and budget is available before commencement of construction?		
16	Is the project integrated into strategic sectoral plans?		
17	Was a location hazard assessment included in the Project Report including any mitigation measures?		
18	Do the designs and drawings illustrate inclusion of Green Infrastructure in storm water design?		
	<ul style="list-style-type: none"> • If any of the questions 1 to 15 above is answered with a "NO", the project can NOT be funded under UDG. • Issues raised in questions 16 to 17 highly recommended for relevant projects. 		
	Filled by: Name: _____ Municipal Engineer Date: ____/____/____	Signature:	
	Verified by: Name: _____ Municipal Manager Date: ____/____/____	Signature:	

ANNEX 14: RESILIENT URBAN INFRASTRUCTURE – PROJECT COMPLETION STAGE CHECKLIST

PROJECT COMPLETION STAGE			
Questions to be asked after completion of project		YES	NO
1	Is there a project completion report (or similar)?		
2	Does the project completion report outline quality assurance tests and any design variations?		
3	Were As built drawings (hard and soft copy) prepared for completed project and form part of the completion report?		
4	Has an operation and maintenance plan, responsibility and budget for operation and maintenance of infrastructure and services been prepared or Where asset is part of existing system the existing plan, responsibilities and budget updated?		
5	Were at least two stakeholder's consultations with Project Affected Persons (PAPs) undertaken during construction?		
<ul style="list-style-type: none"> If any of the questions 1 to 4 above is answered with a "NO", the Municipality will lose score under PS7. Stakeholder consultations as indicated in question 5 is highly recommended for all projects. 			
Filled by: Name: _____ Municipal Engineer Date: ____/____/____		Signature:	
Verified by: Name: _____ Municipal Manager Date: ____/____/____		Signature:	

References

- i. *The Public Finance Management Act, 2012.*
- ii. Kenya Gazette. Nairobi.
- iii. *Public Procurement and Disposal Act, 2015.*
- iv. *Kiambu County Spatial Plan 2024-2034.*
- v. Kenya Urban Support Programme II (KUSP). *Programme Operations Manual Volume II*
- vi. Government of Kenya (2010). *The Constitution of Kenya, 2010.*
- vii. Government of Kenya (2011). *Urban Areas and Cities Act, 2019.*
- viii. Limuru Integrated Strategic Urban Development Plan, 2021 – 2031.
- ix. National Spatial Plan, 2015-2045.
- x. *County Integrated Development Plan, 2023-2027*
- xi. Kenya National Bureau of statistics (2019). *2019 Kenya Population and Housing Census Volume.*
- xii. United Nations Development Programme (2015). *Sustainable Development Goals.* New York.

