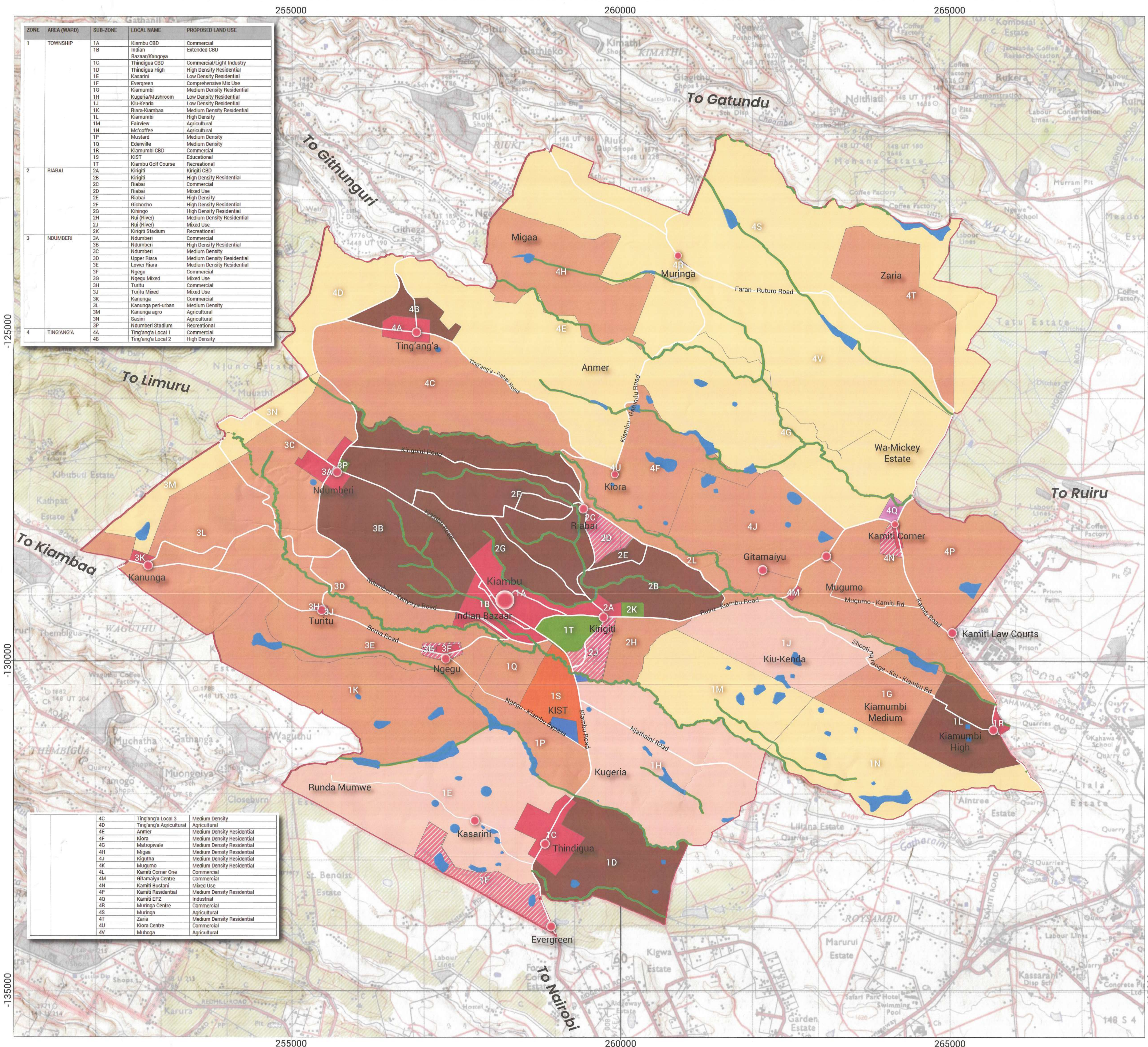


KIAMBU INTEGRATED STRATEGIC URBAN DEVELOPMENT PLAN 2020-2030



| ZONE | AREA (WARD) | SUB-ZONE | LOCAL NAME | PROPOSED LAND USE |
|------|------------------|----------|----------------------|----------------------------|
| 1 | TOWNSHIP | 1A | Kiambu CBD | Commercial |
| | | 1B | Indian Bazaar/Kangya | Extended CBD |
| | | 1C | Thindigua CBD | Commercial/Light Industry |
| | | 1D | Thindigua High | High Density Residential |
| | | 1E | Kasarini | Low Density Residential |
| | | 1F | Evergreen | Comprehensive Mix Use |
| | | 1G | Kiamumbi | Medium Density Residential |
| | | 1H | Kugeria/Mushroom | Low Density Residential |
| | | 1J | Kiu-Kenda | Low Density Residential |
| | | 1K | Riara-Kambaa | Medium Density Residential |
| | | 1L | Kiamumbi | High Density Residential |
| | | 1M | Fairview | Agricultural |
| | | 1N | Mc coffee | Agricultural |
| | | 1P | Mutard | Medium Density Residential |
| | | 1Q | Edenville | Medium Density Residential |
| | | 1R | Kiamumbi CBD | Commercial |
| | | 1S | KIST | Educational |
| | | 1T | Kiambu Golf Course | Recreational |
| | | 2 | RIABAI | 2A |
| 2B | Kirigiti | | | High Density Residential |
| 2C | Riabai | | | Commercial |
| 2D | Riabai | | | Mixed Use |
| 2E | Riabai | | | High Density Residential |
| 2F | Gichocho | | | High Density Residential |
| 2G | Kihingo | | | High Density Residential |
| 2H | Rui (River) | | | Medium Density Residential |
| 2J | Rui (River) | | | Mixed Use |
| 2K | Kirigiti Stadium | | | Recreational |
| 3 | NDUMBERI | 3A | Ndumberi | Commercial |
| | | 3B | Ndumberi | High Density Residential |
| | | 3C | Ndumberi | Medium Density Residential |
| | | 3D | Upper Riara | Medium Density Residential |
| | | 3E | Lower Riara | Medium Density Residential |
| | | 3F | Neguru | Commercial |
| | | 3G | Neguru | Mixed Use |
| | | 3H | Turitu | Commercial |
| | | 3J | Turitu Mixed | Mixed Use |
| | | 3K | Kanunga | Commercial |
| 4 | TING'ANGA | 4A | Kanunga peri-urban | Medium Density Residential |
| | | 4B | Kanunga agro | Agricultural |
| | | 4C | Sasini | Agricultural |
| | | 4D | Ndumberi Stadium | Recreational |
| | | 4E | Ting'anga Local 1 | Commercial |
| | | 4F | Ting'anga Local 2 | High Density Residential |

| | | |
|----|------------------------|----------------------------|
| 4C | Ting'anga Local 3 | Medium Density Residential |
| 4D | Ting'anga Agricultural | Agricultural |
| 4E | Anmer | Medium Density Residential |
| 4F | Kiora | Medium Density Residential |
| 4G | Matropivale | Medium Density Residential |
| 4H | Migaa | Medium Density Residential |
| 4J | Kigutha | Medium Density Residential |
| 4K | Mugumo | Medium Density Residential |
| 4L | Kamiti Corner One | Commercial |
| 4M | Gitamaiyu Centre | Commercial |
| 4N | Kamiti Bustani | Mixed Use |
| 4P | Kamiti Residential | Medium Density Residential |
| 4Q | Kamiti EPZ | Industrial |
| 4R | Muringa Centre | Commercial |
| 4S | Muringa | Agricultural |
| 4T | Zaria | Medium Density Residential |
| 4U | Kiora Centre | Commercial |
| 4V | Muhoga | Agricultural |

| LEGEND | | | |
|-----------|----------------------------|--|--|
| | Towns | | |
| | River | | |
| | Roads | | |
| | Riparian | | |
| | Dams | | |
| | Kiambu sub-county | | |
| Land uses | | | |
| | High Density Residential | | |
| | Medium Density Residential | | |
| | Low Density Residential | | |
| | Industrial | | |
| | Educational | | |
| | Recreational | | |
| | Public Purpose | | |
| | Commercial | | |
| | Public Utility | | |
| | Agriculture | | |
| | Mixed Use | | |

| Code | Land Use | Area (Ha) | Percentage (%) |
|----------------|----------------------------|-------------|----------------|
| 0 ₁ | High Density Residential | 1552.74 | 15.8 |
| 0 ₂ | Medium Density Residential | 3765.99 | 38.31 |
| 0 ₃ | Low Density Residential | 1248.98 | 12.71 |
| 1 | Industrial | 72.07 | 0.73 |
| 2 | Educational | 206.2 | 2.1 |
| 3 | Recreational | 125.85 | 1.28 |
| 4 | Public Purpose | 42.96 | 0.44 |
| 5 | Commercial | 99.14 | 1.01 |
| 6 | Public Utility | 25.12 | 0.26 |
| 7 | Transportation | 521.23 | 5.3 |
| 8 | Conservation | 56.2 | 0.57 |
| 9 | Agriculture | 1765.86 | 17.96 |
| 10 | Mixed-Use | 347.2 | 3.53 |
| | Total | 9830 | 100 |

CERTIFICATION
I certify that this plan has been prepared and published as per the requirement of the Physical and Land use Planning Act No. 13 of 2019 and the Physical Planning Act Cap, 286

SIGNATURE _____ DATE _____
Planner Dan K. Kiara
Registered Physical Planner

AMMENDMENTS

DEPARTMENT OF LANDS, HOUSING, PHYSICAL PLANNING
MUNICIPAL ADMINISTRATION AND HOUSING DEVELOPMENT

KIAMBU ZONING PLAN ISUDP 2020-2030

PREPARED BY:

DATE: FEBRUARY 2020
SCALE: 1: 20,000

DRAWN BY: SARAH GICHANGA, JESSE MAGAL, MARTIN KIMOTHO, LUCY MUIRURI

DEPARTMENTAL REFERENCE No. KBU / ISUDP / 40 / 2020/ 01
CERTIFIED BY:

DATE 15/05/2024
COUNTY DIRECTOR OF PHYSICAL AND LAND USE PLANNING

RECOMMENDED BY:

DATE 15/05/2024
CECM
LANDS, HOUSING, PHYSICAL PLANNING,
MUNICIPAL ADMINISTRATION AND URBAN DEVELOPMENT

APPROVAL:

This Plan has been Approved as per requirements of the Physical and Land use Planning (Local Physical and Land use Development Plan) Regulations, 2020 sec. 13 Urban Areas and Cities Act, 2011 (Revised 2019) and County Governments Act No. 17 of 2012
HANSARD NO. AK 302/12/2024 DATE 25/12/2024
APPROVED LOCAL PHYSICAL AND LAND USE DEVELOPMENT PLAN No. 5