

# THE KIAMBU REPORT



Quote of the Month

Visit us at [www.kiambu.go.ke](http://www.kiambu.go.ke)

**"GREATNESS IS DEFINED BY THE PROMISES YOU KEEP"**



Health, infrastructure, education, agriculture, water, among key projects

## Inside Wamatangi's Ksh. 23bn 2024-2025 Budget



Kiambu Governor Kimani Wamatangi assents to the Kiambu County Government 2024-2025 Sh23.5 billion budget.

BY 'THE KIAMBU REPORT', SPECIAL CORRESPONDENT

The County Government of Kiambu plans to implement multibillion shillings development and social economic projects in the 2024-2025 financial year, as Governor Kimani Wamatangi continues to push for the restoration of the county's lost glory. With significant investments in roads, water, trade, sports, early childhood education, health, >>>continued on page 2

### TOTAL BUDGET 23,574,754,121

**HEALTH**  
 ■ Ksh. 7.7 billion  
 ■ Completion of new hospitals  
 ■ New equipment

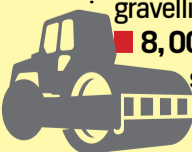


■ Drugs supply  
 ■ Wamatangi care

**EDUCATION**  
 ■ 130 new ECDE centres



**ROADS**  
 ■ 70KM-tarmac and cabro paving



■ Ksh.500M bursary

■ 1,000 KM gravelling and gravelling  
 ■ 8,000 solar streetlights

### WATER

■ 200 KM water network



**TITLE DEEDS**  
 ■ Over 10,000

### WARD DEVELOPMENT FUND

■ Ksh600M

### AGRICULTURE

■ 1,800 tonnes free fertilizer  
 ■ 33 tonnes maize seeds  
 ■ 250,000 chicks





# How Wamatangi hopes to accelerate Kiambu's change

Githirioni Model ECDE Centre.



Kiambu Governor Kimani Wamatangi (right) signs a dummy check to mark the launch of the county's Sh500 million annual bursary fund.



Commissioned a water project in Kimende, Kijabe Ward.

>>>continued from page 1

and early childhood infrastructure, social economic empowerment programs in agriculture that include free farm inputs, bursaries, free meals in nursery schools, and free health care through Wamatangi Care, the governor hopes to accelerate his pace to transform the county.

The county invested in similar programmes during the 2023–2024 fiscal year, completing 134 model ECDE centers, grading and graveling 1,200 kilometers of roads, reviving four stalled level four hospitals—Thogoto, Bibirioni, Lari, and Githunguri—and establishing two new ones—Karuri and Juja, along with thirteen new level three hospitals.

Additionally, hospital equipment worth Sh500 million was purchased, 228 kilometers of water reticulation were done, construction of six bus parks was launched, a solar street lighting program was launched, a feed programme for nursery schools was launched, and the and the bursary increased from Sh100 million to Sh500 million.

Maize seeds, fertilizer, and improved kienyeji chicks were also distributed to over 500,000 farmers across the county, while dairy farmers' cooperative societies received milk coolers, pasteurizers, and milk ATMs.

"Beyond what we accomplished the previous financial year, we aim to do more. We made sure to implement programs and projects in each of the six wards, and currently we have greater plans in the works that will completely revamp the county. My plan is to accelerate our development pace so that we can recover the time that we lost," the governor said.

He added, "All the projects and programme we have planned for, we intend to implement to their conclusion. We decided to run a prudent government that put all resources to proper use, and therefore we will have the funds to finance all our projects."

To achieve his ambitions, the governor established a Ksh23.5 billion budget for the 2024–2025 financial year where Sh8.1 billion is exclusively allocated to capital infrastructural projects.

More funds have been allocated to finance various social economic pro-



Muthara Model ECDE Centre, Witeithie Ward.



grams to indicate the status of the community.

Keen to accelerate the pace of its transformative journey in Ksh. 7 billion has been allocated to its health sector for the fiscal year 2024–2025.

This significant investment marks a bold step toward enhancing the county's healthcare infrastructure such as new hospitals, completion of the ongoing ones as well as renovations, improving service delivery, expanding the Human Resource for

Health (HPTU), and securing sustainable health financing.

This year, besides continuing with the feeding program where all 39,000 nursery school children gets a bowl of nutritious uji every day, three boiled eggs per week, and a packet of milk every Thursday, the county has already advertised construction of 130 new ECDE centers.

The center will have PP1 and PP2 classrooms, administration offices in the middle, separate classrooms for teachers and pupils, as well as a play center comprising swings, tunnels, and a sand pit for the children.

Further, the governor, under his 'Leave no Child Behind' mantra, will spend Ksh. 500 million on bursaries, where beneficiaries of the kitty will get between Ksh. 5,000 and Ksh. 10,000 for school fees, while the most vulnerable bright students will get full scholarships.

And in response to the growing demand for skilled professionals, the county also plans to construct 15 state-of-the-art vocational training centers (VTCs) across the 12 sub-counties, complementing the existing facilities.

Manguu Model Ecde Centre, Kiuu Ward.



**"All the projects and programme we have planned for, we intend to implement to their conclusion. We decided to run a prudent government that put all resources to proper use, and therefore we will have the funds to finance all our projects."**  
**Kiambu Governor Kimani Wamatangi**

In the roads sector, the county, through Kenya Urban Support Programme (KUSIP), the Kenya Informal

Settlement Programme, and the Department of Roads, will tarmac and install cabro stones on 70 kilometers of roads, while another 1,000 kilometers will be graded and gravelled.

Ksh. 145 million is set to construct six new bus parks, which are OJ, Kiganjo, Kimende, Juja, and Dagoretti, and rehabilitate the existing Thika main bus park.

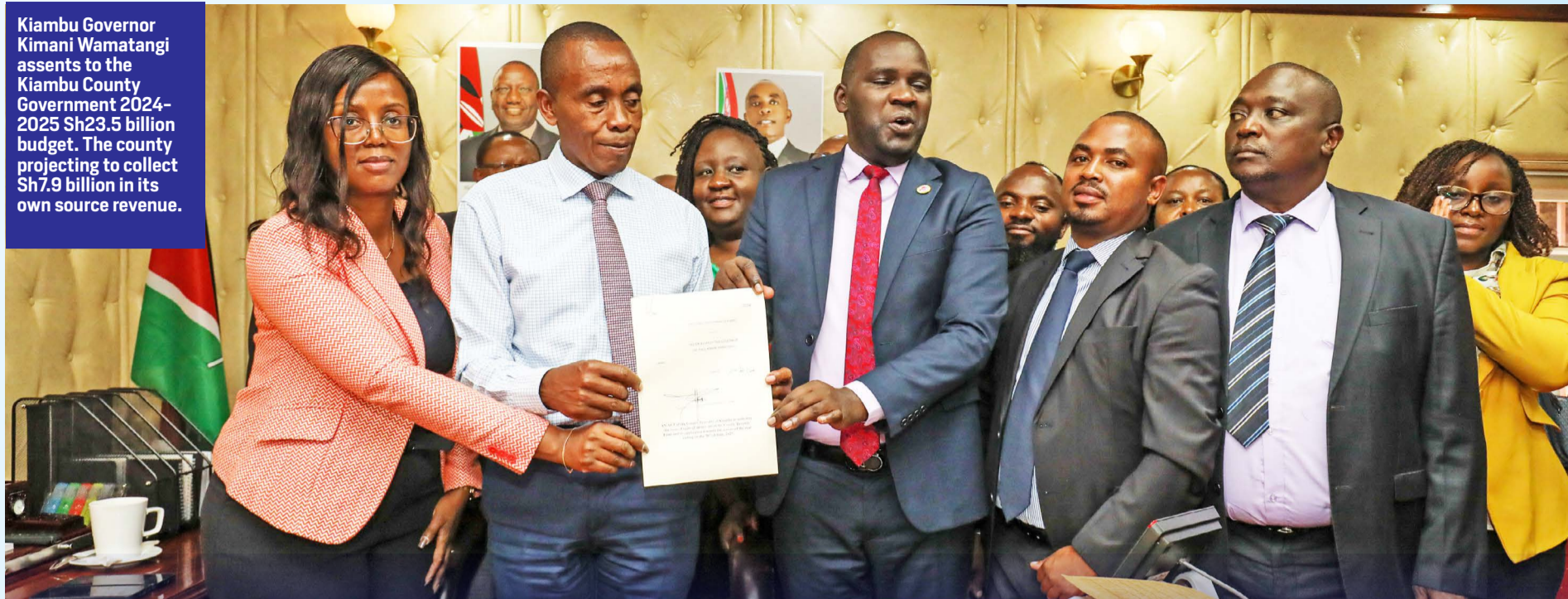
Over 600,000 farmers will receive certified maize seeds and fertilizer, improved kienyeji chicks and heifers, and young men will receive piglets as part of the county's social economic empowerment program that is aimed at tackling food insecurity and poverty.

More than 20 new markets with a capacity of 5,000 traders and 400 modern kiosks, bodaboda sheds, and shoeshine booths will be constructed as the governor works to implement the Bottom-Up Economic Model championed by President William Ruto.

"Kiambu is poised for a transformative change with plans to construct these markets; hence, the county government is investing heavily to see traders get better spaces to conduct their businesses as they are major contributors to the growth of our economy," says Susan Gatwiri, the CEC for Trade.



Kiambu Governor Kimani Wamatangi assents to the Kiambu County Government 2024-2025 Sh23.5 billion budget. The county projecting to collect Sh7.9 billion in its own source revenue.



# Wamatangi's Ksh. 23.5bn budget to spur development and sustainable economic growth in Kiambu

**Ksh.8.1bn exclusively allocated to capital development projects. Sh600 million also set aside for Ward Development Fund**

BY ELIAS NGUGI

The County Government has embarked on an ambitious plan to raise Ksh. 7.9 billion in own source revenue to supplement its mega 23.5 billion budget in the 2024/ 2025 financial year.

The objective of this plan is to ensure that the County raises enough resources towards inclusive growth and economic transformation.

Ksh.8.1 billion have been exclusively allocated to fund capital development projects such as roads, hospitals, ECDE centres, Vocational Training Centres, water infrastructure, drainages, markets, bus parks, bridges among others.

The Governor Kimani Wamatangi-led administration has allocated a significant portion of resources to key sectors of the County economy to be used to fund government services and projects for the period ending June 30, 2025.

Finance & Economic Planning CECM Ms. Nancy Kirumba said: "this year's county appropriation act forms a strong foundation to spur

economic growth, fund critical county development projects in line with Governor Wamatangi's manifesto."

Ms Kirumba said the county hopes to collect the Ksh7.9 billion without increasing any cost to the existing fees and levies.

The county government raised approximately Sh4.6 billion in own-source revenue in the 2023/2024 financial year, the highest amount collected by the regional government since the advent of devolution in 2013.

The Sh4.575 billion, which places the Governor Wamatangi-led administration among the top-performing counties nationally in local revenue mobilization, represents a 25 percent increase over the Sh3.6 billion collected in the financial year 2022/2023.

Data from County Treasury and Controller of Budget indicate that in the 2021/ 2022 and 2022/2023 fiscal years, the county collected Sh3.1 billion and Sh3.6 billion, respectively. In the just-ended financial year, Sh4.575 billion was collected.

In the budget, the county department of health services will receive the lion share of Sh7.7 billion to support the construction of more hospitals, the purchase of drugs and medical equipment and the implementation of the 'Wamatangi Care' Universal Health Coverage programme while the department of Education will receive Shs 2.3 billion for the modernisation of our ECDE centres, the feeding programme, bursaries and vocational training.

The county Department for roads and transport will receive Sh2.4 billion, water 1.1 billion while the county Department for agriculture has been allocated Sh1.2 billion.

Sh600 million has also been allocated for the County Development Ward Fund to spur growth and improve the lives of Kiambu residents in the 60 wards at the grassroots level.

Sh1.3 billion has also been allocated for the Kiambu county assembly to facilitate legislation and other programmes of the County Assembly.

Mr. William Kimani, Chief officer, Finance and Economic planning said, "The County's Economic planning department will ensure that county residents have an in-depth understanding of the planning and budgeting process as guided by different legislation. Our mandate is to facilitate and coordinate the County revenue collection, budgeting processes, economic planning process and to provide leadership in the implementation of finance and economic policies."

He added; "Ours is to encourage sectors to focus on the priorities contained in the Governor's Manifesto, the Kiambu County Integrated Development Plan (CIDP) and respective Sectoral Plans in preparation of budget proposals.

The county is banking on the newly installed enterprise resource planning system to boost the collection of county revenue. The ERP is a holistic system that covers the management of finances in all sectors such as hospital management, building approvals, business permits, and other revenue charges.

The county Government has in the past grappled with underperformance in local revenue mobilisation due to weak systems prone to manipulation and theft by revenue officers. The county has thus initiated various reforms including deploying



**The county hopes to collect the Ksh7.9 billion without increasing any cost to the existing fees and levies.**

**Nancy Kirumba, CECM Finance and Economic Planning**



technology to eliminate theft of revenue by introducing cashless payments.

A new ussd \*476# was recently launched to facilitate payment of various services by the County Government.

The county government also intends to nurture partnerships and alliances as a strategic approach to raising resources with financial institutions, organized groups, private sector through Public Private Partnerships (PPPs), and also formulate policies that will promote establishment of investments to enhance the resource basket. This will diversify its donor base while retaining and deepening its relationship with the current donors and development partners

To ensure prudent management of public resources the county is now prioritizing its spending, to focus on the critical operations and activities that are essential to service delivery to the citizens.

Further, Mr Wamatangi has also established the Kiambu County Revenue Authority, a corporation of the County Government with a mandate to oversee, manage, and undertake the responsibility of revenue collection.

The body, chaired by career finance expert Mr Mburu Kang'ethe, aims to ensure "effectiveness and efficiency in revenue administration" and promote transparency in revenue collection.

The outfit, created following enactment of Kiambu County Revenue Authority Act of 2023, will also guide the collection, receipt, and remittance of revenue to the County Treasury in accordance with the Public Finance Management Act 2012.





Governor Kimani Wamatangi inspect drugs store at Kihara Level Three Hospital.



Governor Kimani Wamatangi inspect the new X-ray and Ultrasound machines at Kihara Level Three Hospital.

# Inside Ksh.7 billion Kiambu health budget

**New hospitals are being constructed, including Gathanji, Gatuanyaga, Maguguni, Ndururumo, Muthaara, and Kiambururu level three hospitals,**

By **KELVIN KIMARU**

**K**een to accelerate the pace of its transformative journey in healthcare, the County Government of Kiambu has allocated Ksh. 7 billion to fund its health sector for the fiscal year 2024-2025.

This significant investment marks a bold step toward enhancing the county's healthcare infrastructure, improving service delivery, expanding the Human Resource for Health (HPTU), and securing sustainable health financing.

These efforts are part of a broader strategy by Governor Kimani Wamatangi to ensure every resident has access to quality medical services, aligning with the county's vision for a healthier future.

According to CECM Health Services Dr. Elias Maina, the county is dedicating adequate resources to make sure facilities are well-equipped and fully prepared to provide the best possible care to everyone in Kiambu.

"Our plans are about ensuring that when the Kiambu people need medical attention, the facilities are not just available but are also up to the task."

At the heart of this transformation is the county's focus on healthcare infrastructure.

A substantial portion of the budget is dedicated to building, renovating, and equipping health facilities across Kiambu.

New hospitals are being constructed, including Gathanji, Gatuanyaga, Maguguni, Ndururumo, Muthaara, and Kiambururu level three hospitals, which will greatly increase access to healthcare in previously underserved

areas.

These projects are on track to be completed within the fiscal year, promising to bring much-needed medical services closer to people.

Existing health facilities are also being upgraded to meet the growing demands of the population. Hospitals like Ndeiya, Uthiru, and Gichuru are undergoing significant expansions, with new medical and maternity wards.

"These upgrades are essential for providing specialized care and reducing the burden on larger referral hospitals," Dr Maina said.

Rural healthcare is not being left behind; facilities such as Karuri, Lusigette, and Juja are being enhanced to offer more comprehensive services, including new medical blocks.

Smaller health centers, like Kinale, are also being refurbished to ensure that quality healthcare is accessible even in the most remote parts of the county.

According to the Head of Health Infrastructure, Ferdinand Milliano, the department also endeavours to complete the ongoing construction of level



**Our plans are about ensuring that when the Kiambu people need medical attention, the facilities are not just available but are also up to the task. Dr Elias Maina, CECM Health Services**

three facilities.

In addition to physical infrastructure, the county is investing in the latest medical technologies, including telemedicine, advanced diagnostic tools, and electronic health records.

These advancements are expected to improve patient outcomes, streamline healthcare operations, and ensure that resources are managed effectively.

Director of Medical Services, Dr. Faith Mundachi says the medical field is revolutionizing rapidly, and we as a county should follow suit. "Driven by the latest technology and best practices, we ought to give the best to our residents."

Service delivery is another critical area of focus.

The county is committed to expanding the range of services available at health facilities.

This includes the introduction of specialized services such as maternal and child health programs, chronic disease management, and mental health services.

To support these services, the county is investing in continuous training and capacity-building programs for healthcare workers, ensuring they have the skills and knowledge to provide the highest standard of care.

Improving the patient experience is also a priority.

The county aims to reduce wait times, improve patient flow, and ensure that health facilities are welcoming and accessible to all.

Feedback mechanisms are being implemented to continually assess and enhance service delivery, making sure that the healthcare system meets the needs of the community.

The success of these initiatives relies heavily on the strength of the human resources department for health.

The county is addressing staffing shortages by recruiting additional healthcare professionals, including doctors, nurses, and specialists.

To retain these professionals, the county is offering competitive compensation packages, opportunities for professional development, and a supportive work environment.

Specialized training programs are being introduced in partnership with leading medical institutions, focusing on critical areas such as surgery, oncology, and emergency care.

The welfare of healthcare workers is also being prioritized, with improved



Thogoto Level Four Hospital in Kikuyu Sub-County



Ongoing construction of Juja Level Four Hospital, Juja Sub-County



Kahawa Sukari Level Three Hospital in Kahawa Sukari Ward, Ruiru Sub-County.

working conditions, mental health support, and access to essential tools and resources.

Health financing is the backbone of this ambitious plan. Kiambu County is exploring public-private partnerships (PPPs) to bring in additional funding, expertise, and technology.

These partnerships are expected to accelerate the development of health

infrastructure and services. The county is also working to increase health insurance coverage through the Wamatangi Care program, ensuring that healthcare is affordable and accessible to all residents.

This program pools resources for health facilities, with rebates being reinvested to further improve service delivery.



# Wamatangi Care Will Continue: No Need for alarm amid NHIF reforms

By **KELVIN KIMARU**

**K**iambu County's Wamatangi Care program, launched on October 12, 2023, stands as a pillar of the county's healthcare strategy under Governor Kimani Wamatangi's leadership.

The scheme was designed with a clear purpose which is to elevate the health and well-being of residents by reinvesting funds directly into the County health facilities.

The program is part of an ambitious ten-year plan to create a more resilient and responsive healthcare system in Kiambu.

Despite recent national health reforms, particularly the introduction of the Social Health Insurance Fund (SHIF), there is no reason for concern—Wamatangi Care is here to stay.

The national government's rollout of SHIF, as mandated by the Social Health Act, represents a blue print towards achieving Universal Health Coverage (UHC) in Kenya.

SHIF is designed to replace the National Health Insurance Fund (NHIF) and centralize healthcare financing to ensure that every Kenyan has access to quality medical services.

While this development has sparked some concerns among Kiambu residents about the future of Wamatangi Care, the county government is committed to continuing the program, which has already proven successful with over 500,000 residents enrolled.

Dr. Elias Maina, the County Executive Committee Member (CECM) for Health Services, has reassured the public that Wamatangi Care will continue as planned, even as the national healthcare landscape evolves.

"I want to assure all Kiambu residents that Wamatangi Care is not going anywhere. This program is integral to our ten-year plan, and we have built a strong foundation that will see it thrive alongside the national SHIF framework," Dr. Maina stated.

He emphasized that the program's innovative financial model, which reinvests rebates from healthcare services back into facilities, is key to its sustainability and success. The county's ten-year plan for Wamatangi Care is comprehensive, focusing on expanding enrollment, improving the quality of healthcare services, and ensuring that the program remains financially robust.

The reinvestment of rebates into health facilities has already resulted in significant improvements, from upgrading infrastructure to enhancing service delivery and staff capacity.

These efforts are designed to build a self-sustaining healthcare system that can meet the growing needs of Kiambu's population over the long term.

Governor Wamatangi's administration is confident that Wamatangi Care will not only continue but will also complement the objectives of SHIF.



"I want to assure all Kiambu residents that Wamatangi Care is not going anywhere. This program is integral to our ten-year plan, and we have built a strong foundation that will see it thrive alongside the national SHIF framework," **Dr. Elias Maina, the County Executive Committee Member (CECM) for Health Services**

While SHIF will provide a broader national safety net, Wamatangi Care will ensure that the specific needs of Kiambu residents are met through targeted investments and localized solutions.

The synergy between these two initiatives will enhance the entire healthcare system, providing better results for residents without compromising the unique benefits that Wamatangi Care offers.

Dr. Patrick Nyaga, the Chief Officer for Health Services, also highlighted the county's commitment to Wamatangi Care.

"We are fully aligned with the national goals of UHC, but we also recognize the importance of maintaining our County programs. Wamatangi Care is an essential part of our healthcare strategy, and we have a clear vision for its future. The ten-year plan we have in place will ensure that the program continues to grow and serve our people effectively," Dr. Nyaga explained.

The introduction of SHIF represents an opportunity for Kiambu County to enhance its healthcare services further, not a threat to existing programs.

The county government is working closely with national authorities to ensure that Wamatangi Care and SHIF can operate in tandem, each reinforcing the other to provide the best possible healthcare outcomes for residents.

As Kiambu moves forward with its ten-year plan, residents can rest assured that Wamatangi Care is secure and will continue to play a role in the county's healthcare system. The program's success so far, evidenced by the enrollment of over half a million individuals and the visible improvements in healthcare delivery, is a strong indicator of its long-term viability.



# Why new digital healthcare system is a game changer for Kiambu

By **KELVIN KIMARU**

**O**ne of the pillars of modern healthcare is the effective management of hospital information systems. These systems play a big role in streamlining operations, ensuring the availability of necessary medical resources, and improving patient outcomes.

In alignment with this vision, Governor Kimani Wamatangi's administration has addressed this by implementing an Enterprise Resource Planning (ERP) system across all its healthcare facilities. This in line with the County's efforts to modernise its healthcare infrastructure, ensuring that every resident has access to efficient, timely and well-managed medical care.

This is a system that has been rolled out and will take root during this 2024/2025 Financial Year.

The ERP system is a comprehensive digital platform designed to integrate and manage various functions within the healthcare sector.

One of the features of this system is its ability to track the inventory of drugs across all health facilities within the county. By linking the system to each facility, healthcare administrators can now monitor drug stock levels with the touch of a button, ensuring that essential medicines are always available where they are needed most.

A central component is the newly completed Central Medical store at Ruiru Level 4 Hospital. This facility will serve as the hub for all drug storage in the county, ensuring that the supply chain is both efficient and responsive.

With the ERP system in place, managing the flow of medical commodities from this central store to various health facilities will be more streamlined than ever before.

The implementation of the ERP system has not gone unnoticed. During a recent tour by the Senate Health Committee, the chairperson, Senator Jackson Mandago of Uasin Gishu, praised the county's efforts in reforming healthcare management.

He noted: "Kiambu County has set a benchmark in healthcare management with the implementation of this ERP system. This initiative not only enhances efficiency but also ensures that the right medical resources are available at the right time."

## Benefits of the ERP System

The adoption of the ERP system in



"Kiambu County has set a benchmark in healthcare management with the implementation of this ERP system. This initiative not only enhances efficiency but also ensures that the right medical resources are available at the right time." **Senate Health Committee, the chairperson, Senator Jackson Mandago of Uasin Gishu**

Kiambu County's healthcare sector brings with it numerous benefits, including:

**1 Enhanced Inventory Management:** The system allows for real-time tracking of drug inventories across all facilities, preventing stock outs and reducing wastage due to expired drugs.

**2 Centralised Control:** With the central medical store at Ruiru Level 4 Hospital acting as the distribution hub, the county can ensure a more organised and efficient supply chain, reducing the likelihood of supply disruptions.

**3 Improved Resource Allocation:** The ERP system provides data-driven insights, enabling better decision-making in terms of resource allocation and procurement, thus leading to cost savings.

**4 Increased Transparency and Accountability:** The ability to monitor drug stocks at all facilities ensures greater transparency in the management of medical commodities, reducing the risk of pilferage and mismanagement.

**5 Streamlined Operations:** By automating many administrative tasks, the ERP system reduces the burden on healthcare staff, allowing them to focus more on patient care.

**6 Better Patient Care:** With improved drug availability and efficient management, patients can expect more reliable service, fewer delays, and better healthcare experiences. The implementation of the ERP system will help the county in making good decisions and proper planning.



Manguu Model Ecde Centre, Kiuu Ward



# 130 new ECDE centres to be constructed in the second phase of the mega project

By ANN GRACE KIIRU

As Governor Kimani Wamatangi's administration continues transforming the Early Childhood Development Education (ECDE) sector, the second phase of construction has begun, with 130 new centres set for development.

Tenders for these centres have already been advertised for the 2024/2025 financial year.

This will see the number of modernised ECDE centres to 264, with the plan being to complete all the 524 centres in the county by 2026.

The first phase of infrastructure construction, which began in the last financial year, has seen 134 centres others established where each of the ward got at least two new centres. The impact was immediately felt as admissions rose from 32,000 to 38,000 pupils within one year.

The new phase will ensure that all wards across the county receive at least two new centres.

For instance, in Limuru sub-county, eight new centres will be built in the four wards, where pupils are currently using makeshift classes. In Thika sub-county, 14 new centres will be constructed across five wards as part of this ambitious plan.

Governor Kimani Wamatangi reiterated his commitment to community empowerment, emphasising the importance of the ECDE sector in laying a firm foundation for children during their formative years.

"We are focusing special attention on the ECDE sector, which is a critical component of the education system. We want to ensure that our ECDEs are even better than the private ones," he said.

The governor cited the case of Juja's Murera Ward, where the population is rapidly growing, but schools are far from reach for small children. "Murera will now have at least two new centres with modern classrooms closer to homes, protecting small children from wildlife attacks,"

he noted.

County Executive Member for Education, Ms. Nancy Gichungwa, expressed optimism, noting that this project was long overdue. She added that this overhaul of early childhood development and education was a crucial step toward enhancing access.

"This phase will significantly expand access to early childhood education, particularly in underserved areas. The increase in ECDE centres will help reduce the distance young children have to travel to access education, making it more accessible and inclusive," she said.

Ms. Gichungwa also reiterated the county government's commitment to delivering quality education by employing well-trained teachers, providing appropriate learning materials, and creating child-friendly environments aimed at laying a strong foundation for children's future learning and development.

Economically, she noted, the sec-

ond phase of construction would generate employment opportunities, both during the construction phase and in the long term, through the hiring of teaching and administrative staff. "This will have positive economic ripple effects in the local communities," she added.

Ruiru sub-county, being the most populated in Kiambu, is also the fastest growing in terms of development, creating a high demand for education. It will therefore receive 14 additional centres to bolster literacy levels and cater to the rapidly growing population.

Perhaps the most significant addition to this ambitious project is the supplementary new centres in Lari sub-county. Once referred to as 'remote Kiambu,' Governor Wamatangi has, in two years, managed to change the narrative with a remarkable development plan. With 11 new schools set to be built in all wards, Lari residents now enjoy an all-inclusive administration.

In the Githunguri and Gatundu South sub-counties, each of the four wards will receive 14 new centres, while Kiambu sub-county will receive eight across all four wards. Additionally, the government has set aside funds to enhance the school feeding program, which has significantly contributed to the fast-rising enrolment rate across the county.

Director of ECDEs, Ms. Dorcas Muthoni, noted that this overhaul of the learning centres has relieved parents of the burden of paying for meals and fees, as the county government covers the costs.

"The governor has gone out of his way to cushion parents, especially in these tough economic times. We provide highly nutritious meals throughout the week, and the approved budget ensures that the program runs for another year uninterrupted," she said, adding that the government is committed to improving and enhancing learning standards in Kiambu.

Githirioni Model ECDE Centre.



Muthara Model ECDE Centre, Witeithie Ward.





# PROPOSED CONSTRUCTION OF MODEL ECDE CENTRE WITH OFFICES AND TOILET BLOCK at VARIOUS ECDE CENTRES IN KIAMBU COUNTY as listed for the financial year 2024/2025

WARD	TENDER NUMBER	PROJECT FY. 2024/2025	ELIGIBILITY
GITUAMBA	CGK/EDU/ECDE/001/24/25	MIUGU MODEL ECDE CENTRE	OPEN TO ALL
	CGK/EDU/ECDE/002/24/25	NG'ETHU MODEL ECDE CENTRE	OPEN TO ALL
MANG'U	CGK/EDU/ECDE/003/24/25	KARURE MODEL ECDE CENTRE	OPEN TO ALL
	CGK/EDU/ECDE/004/24/25	NYAMATHUMBI MODEL ECDE CENTRE	OPEN TO ALL
GITHOBOKONI	CGK/EDU/ECDE/006/24/25	GATEI MODEL ECDE CENTRE	OPEN TO ALL
	CGK/EDU/ECDE/007/24/25	THURAKU MODEL ECDE CENTRE	OPEN TO ALL
CHANIA	CGK/EDU/ECDE/008/24/25	KAMWANGI MODEL ECDE CENTRE	OPEN TO ALL
	CGK/EDU/ECDE/009/24/25	MWIRIGO MODEL ECDE CENTRE	OPEN TO ALL
NG'ENDA	CGK/EDU/ECDE/010/24/25	KAGUMOINI MODEL ECDE CENTRE	OPEN TO ALL
	CGK/EDU/ECDE/011/24/25	ICACIRI MODEL ECDE CENTRE	OPEN TO ALL
	CGK/EDU/ECDE/012/24/25	ITURU MODEL ECDE CENTRE	OPEN TO ALL
	CGK/EDU/ECDE/013/24/25	KARIRAU MODEL ECDE CENTRE	OPEN TO ALL
KIAMWANGI	CGK/EDU/ECDE/014/24/25	GATITU MODEL ECDE CENTRE	OPEN TO ALL
	CGK/EDU/ECDE/015/24/25	MUTI-MUMU MODEL ECDE CENTRE	OPEN TO ALL
	CGK/EDU/ECDE/016/24/25	NGENDA MODEL ECDE CENTRE	OPEN TO ALL
	CGK/EDU/ECDE/017/24/25	NEMBU MODEL ECDE CENTRE	OPEN TO ALL
NDARUGU	CGK/EDU/ECDE/018/24/25	GIKOBU MODEL ECDE CENTRE	OPEN TO ALL
	CGK/EDU/ECDE/019/24/25	KIRANGI MODEL ECDE CENTRE	OPEN TO ALL
KIGANJO	CGK/EDU/ECDE/020/24/25	KIAMWORIA MODEL ECDE CENTRE	OPEN TO ALL
	CGK/EDU/ECDE/021/24/25	KIAMUGO MODEL ECDE CENTRE	OPEN TO ALL
	CGK/EDU/ECDE/022/24/25	MUHOHO MODEL ECDE CENTRE	OPEN TO ALL
	CGK/EDU/ECDE/023/24/25	KIMIRITIA MODEL ECDE CENTRE	OPEN TO ALL
IKINU	CGK/EDU/ECDE/024/24/25	IKINU MODEL ECDE CENTRE	OPEN TO ALL
	CGK/EDU/ECDE/025/24/25	KARIA MODEL ECDE CENTRE	OPEN TO ALL
GITHIGA	CGK/EDU/ECDE/026/24/25	MATUGUTA MODEL ECDE CENTRE	OPEN TO ALL
	CGK/EDU/ECDE/027/24/25	GATITU MODEL ECDE CENTRE	OPEN TO ALL
	CGK/EDU/ECDE/028/24/25	IHIGA MODEL ECDE CENTRE	OPEN TO ALL
GITHUNGURI	CGK/EDU/ECDE/029/24/25	KIAIRIA MODEL ECDE CENTRE	OPEN TO ALL
	CGK/EDU/ECDE/030/24/25	NGOCHI COMMUNITY MODEL ECDE CENTRE	OPEN TO ALL
NGEWA	CGK/EDU/ECDE/031/24/25	KIAMBURURU MODEL ECDE CENTRE	OPEN TO ALL
	CGK/EDU/ECDE/032/24/25	NDIRETI MODEL ECDE CENTRE	OPEN TO ALL
	CGK/EDU/ECDE/033/24/25	MIGUTA MODEL ECDE CENTRE	OPEN TO ALL
KOMOTHAI	CGK/EDU/ECDE/034/24/25	KITAMAIYU MODEL ECDE CENTRE	OPEN TO ALL
	CGK/EDU/ECDE/035/24/25	KIHURIRIO MODEL ECDE CENTRE	OPEN TO ALL
	CGK/EDU/ECDE/036/24/25	KOMOTHAI MODEL ECDE CENTRE	OPEN TO ALL
JUJA	CGK/EDU/ECDE/037/24/25	GACHORORO MODEL ECDE CENTRE	OPEN TO ALL
	CGK/EDU/ECDE/038/24/25	KIBII MODEL ECDE CENTRE	OPEN TO ALL
KALIMONI	CGK/EDU/ECDE/039/24/25	ABBA SALAMA MODEL ECDE CENTRE	OPEN TO ALL
	CGK/EDU/ECDE/040/24/25	ATHI MODEL ECDE CENTRE	OPEN TO ALL
	CGK/EDU/ECDE/041/24/25	THIRIRIKA MODEL ECDE CENTRE	OPEN TO ALL
MURERA	CGK/EDU/ECDE/042/24/25	NEW TOLL MODEL ECDE CENTRE	OPEN TO ALL
	CGK/EDU/ECDE/043/24/25	MUGUTHA MODEL ECDE CENTRE	OPEN TO ALL
	CGK/EDU/ECDE/044/24/25	RUERA MODEL ECDE CENTRE	OPEN TO ALL
THETA	CGK/EDU/ECDE/045/24/25	KUMURA MODEL ECDE CENTRE	OPEN TO ALL
	CGK/EDU/ECDE/046/24/25	MAGOMANO MODEL ECDE CENTRE	OPEN TO ALL
WITEITHIE	CGK/EDU/ECDE/047/24/25	WITEITHIE COMMUNITY MODEL ECDE CENTRE	OPEN TO ALL
	CGK/EDU/ECDE/048/24/25	NYACABA MODEL ECDE CEDNTRE	OPEN TO ALL
	CGK/EDU/ECDE/049/24/25	MUHAKA COMMUNITY MODEL ECDE CENTRE	OPEN TO ALL
KABETE	CGK/EDU/ECDE/050/24/25	KING'EERO MODEL ECDE CENTRE	OPEN TO ALL
NYATHUNA	CGK/EDU/ECDE/051/24/25	KIRANGARI MODEL ECDE CENTRE	OPEN TO ALL
	CGK/EDU/ECDE/052/24/25	GATHIGA MODEL ECDE CENTRE	OPEN TO ALL
	CGK/EDU/ECDE/053/24/25	NYATHUNA MODEL ECDE CENTRE	OPEN TO ALL
	CGK/EDU/ECDE/054/24/25	KARURA KA NYUNGU MODEL ECDE CENTRE	OPEN TO ALL
GITARU	CGK/EDU/ECDE/055/24/25	RUNGIRI MODEL ECD CENTRE	OPEN TO ALL
	CGK/EDU/ECDE/056/24/25	NDURARUA MODEL ECDE CENTRE	OPEN TO ALL
	CGK/EDU/ECDE/057/24/25	GATAARA MODEL ECDE CENTRE	OPEN TO ALL
MUGUGA	CGK/EDU/ECDE/058/24/25	GICHANA MODEL ECDE CENTRE-PERIMETER WALL	OPEN TO ALL
	CGK/EDU/ECDE/059/24/25	WANGIGE MODEL ECDE CENTRE	OPEN TO ALL
	CGK/EDU/ECDE/060/24/25	KAHUHO MODEL ECDE CENTRE	OPEN TO ALL
CIANDA	CGK/EDU/ECDE/061/24/25	KAWAIDA MODEL ECDE CENTRE	OPEN TO ALL
	CGK/EDU/ECDE/062/24/25	RAINI MODEL ECDE CENTRE	OPEN TO ALL
	CGK/EDU/ECDE/063/24/25	GATHANGA COMMUNITY MODEL ECDE CENTRE	OPEN TO ALL
NDENDERU	CGK/EDU/ECDE/064/24/25	ACK KARURA MODEL ECDE CENTRE	OPEN TO ALL
	CGK/EDU/ECDE/065/24/25	GACHARAGE MODEL ECDE CENTRE	OPEN TO ALL
KIHARA	CGK/EDU/ECDE/066/24/25	KAMUIRU MODEL ECDE CENTRE	OPEN TO ALL
KIAMBU TOWNSHIP	CGK/EDU/ECDE/067/24/25	KIAMBU TOWNSHIP MODEL ECDE CENTRE	OPEN TO ALL
	CGK/EDU/ECDE/068/24/25	THINDINGUA COMMUNITY MODEL ECDE CENTRE	OPEN TO ALL

NDUMBERI	CGK/EDU/ECDE/069/24/25	KARUNGA MODEL ECDE CENTRE	OPEN TO ALL
	CGK/EDU/ECDE/070/24/25	KANGOYA MODEL ECDE CENTRE	OPEN TO ALL
RIABAI	CGK/EDU/ECDE/071/24/25	GICOCO MODEL ECDE CENTRE	OPEN TO ALL
	CGK/EDU/ECDE/072/24/25	CHIEF WANDIE COMMUNITY MODEL ECDE CENTRE	OPEN TO ALL
TING'ANG'A	CGK/EDU/ECDE/073/24/25	HGM TING'ANG'A MODEL ECDE CENTRE	OPEN TO ALL
	CGK/EDU/ECDE/074/24/25	ACK KAMITI ANMER MODEL ECDE CENTRE	OPEN TO ALL
	CGK/EDU/ECDE/075/24/25	THOGOTO MODEL ECDE CENTRE	OPEN TO ALL
	CGK/EDU/ECDE/076/24/25	THOGOTO COMMUNITY MODEL ECDE CENTRE	OPEN TO ALL
SIGONA	CGK/EDU/ECDE/077/24/25	NDERI MODEL ECDE CENTRE	OPEN TO ALL
	CGK/EDU/ECDE/078/24/25	NDUMA MODEL ECDE CENTRE	OPEN TO ALL
KINOO	CGK/EDU/ECDE/079/24/25	MUTHIGA SHAURI MODEL ECDE CENTE PE-RIMETER WALL	OPEN TO ALL
KARAI	CGK/EDU/ECDE/080/24/25	GICHARANI MODEL ECDE CENTRE	OPEN TO ALL
	CGK/EDU/ECDE/081/24/25	MAI-A-IHII MODEL ECDE CENTRE	OPEN TO ALL
NACHU	CGK/EDU/ECDE/082/24/25	KANYIHA MODEL ECDE CENTRE	OPEN TO ALL
	CGK/EDU/ECDE/083/24/25	KANDUTURA MODEL ECDE CENTRE	OPEN TO ALL
	CGK/EDU/ECDE/084/24/25	NDIGU-INI MODEL ECDE CENTRE	OPEN TO ALL
KIABE	CGK/EDU/ECDE/085/24/25	KIMENDE MODEL ECDE CENTRE	OPEN TO ALL
	CGK/EDU/ECDE/086/24/25	KINGATUA MODEL ECDE CENTRE	OPEN TO ALL
KINALE	CGK/EDU/ECDE/087/24/25	KINALE MODEL ECDE CENTRE	OPEN TO ALL
	CGK/EDU/ECDE/088/24/25	MUGIKO MODEL ECDE CENTRE	OPEN TO ALL
LARI-KIRENGA	CGK/EDU/ECDE/089/24/25	KIFAGARE MODEL ECDE CENTRE	OPEN TO ALL
	CGK/EDU/ECDE/090/24/25	GATHAITI MODEL ECDE CENTRE	OPEN TO ALL
	CGK/EDU/ECDE/091/24/25	GITITHIA MODEL ECDE CENTRE	OPEN TO ALL
KAMBURU	CGK/EDU/ECDE/092/24/25	MUIRUNGI MODEL ECDE CENTRE	OPEN TO ALL
	CGK/EDU/ECDE/093/24/25	NYAMUTHANGA MODEL ECDE CENTRE	OPEN TO ALL
NYANDUMA	CGK/EDU/ECDE/094/24/25	KARENGE MODEL ECDE CENTRE	OPEN TO ALL
	CGK/EDU/ECDE/095/24/25	GACHOIRE MODEL ECDE CENTRE	OPEN TO ALL
BIBIRIONI	CGK/EDU/ECDE/096/24/25	MANGUO MODEL ECDE CENTRE	OPEN TO ALL
	CGK/EDU/ECDE/097/24/25	MURENGETI MODEL ECDE CENTRE	OPEN TO ALL
LIMURU CENTRAL	CGK/EDU/ECDE/098/24/25	LIMURU COUNCIL MODL ECDE CENTRE	OPEN TO ALL
	CGK/EDU/ECDE/099/24/25	RIRONI MODEL ECDE CENTRE	OPEN TO ALL
LIMURU EAST	CGK/EDU/ECDE/100/24/25	RONGAI MODEL ECDE CENTRE	OPEN TO ALL
	CGK/EDU/ECDE/101/24/25	KIWAROGA MODEL ECDE CENTRE	OPEN TO ALL
NGECHA-TIGONI	CGK/EDU/ECDE/102/24/25	J'MAARA MODEL ECDE CENTRE	OPEN TO ALL
	CGK/EDU/ECDE/103/24/25	TIGONI MODEL ECDE CENTRE	OPEN TO ALL
	CGK/EDU/ECDE/104/24/25	ST. PAUL MODEL ECDE CENTRE	OPEN TO ALL
NDEIYA	CGK/EDU/ECDE/105/24/25	KIAWANDA MODEL ECDE CENTRE	OPEN TO ALL
	CGK/EDU/ECDE/106/24/25	RWAMBURI MODEL ECDE CENTRE	OPEN TO ALL
	CGK/EDU/ECDE/107/24/25	RWACUMARI MODEL ECDE CENTRE	OPEN TO ALL
BIASHARA	CGK/EDU/ECDE/108/24/25	ST.GEORGE'S MODEL ECDE CENTRE	OPEN TO ALL
	CGK/EDU/ECDE/109/24/25	GITHUNGURI RANCHING MODEL ECDE CENTRE	OPEN TO ALL
GATONG'ORA	CGK/EDU/ECDE/110/24/25	KAMAKI'S COMMUNITY MODEL ECDE CENTRE	OPEN TO ALL
	CGK/EDU/ECDE/111/24/25	MUTONYA MODEL ECDE CENTRE PERIMETER WALL	OPEN TO ALL
	CGK/EDU/ECDE/112/24/25	MWALIMU FARM MODEL ECDE CENTRE	OPEN TO ALL
	CGK/EDU/ECDE/113/24/25	GIKUMARI MODEL ECDE CENTRE	OPEN TO ALL
GITOTHUA	CGK/EDU/ECDE/114/24/25	KIRATINA MODEL ECDE CENTRE	OPEN TO ALL
	CGK/EDU/ECDE/115/24/25	TATU MODEL ECDE CENTRE	OPEN TO ALL
	CGK/EDU/ECDE/116/24/25	MUKUYU MODEL ECDE CENTRE	OPEN TO ALL
KIUU	CGK/EDU/ECDE/117/24/25	KWANG'ETHE MODEL ECDE CENTRE	OPEN TO ALL
	CGK/EDU/ECDE/118/24/25	MANGUU COMMUNITY MODEL ECDE CENTRE PERIMETER WALL	OPEN TO ALL
MWIHOKO	CGK/EDU/ECDE/120/24/25	FINANCE MODEL ECD CENTRE	OPEN TO ALL
	CGK/EDU/ECDE/121/24/25	KIZITO LANGATA MODEL ECDE CENTRE	OPEN TO ALL
KAHAWA SUKARI	CGK/EDU/ECDE/122/24/25	NDIINI MODEL ECDE CENTRE	OPEN TO ALL
THIKA TOWNSHIP	CGK/EDU/ECDE/123/24/25	ATHENA MODEL ECDE CENTRE	OPEN TO ALL
	CGK/EDU/ECDE/124/24/25	KIANJAU MODEL ECDE CENTRE	OPEN TO ALL
HOSPITAL	CGK/EDU/ECDE/125/24/25	THIKA MUSLIM MODEL ECDE CENTRE	OPEN TO ALL
	CGK/EDU/ECDE/126/24/25	KIBOKO MODEL ECDE CENTRE	OPEN TO ALL
	CGK/EDU/ECDE/127/24/25	QRS MODEL ECDE CENTRE	OPEN TO ALL
KAMENU	CGK/EDU/ECDE/128/24/25	KIMUCHU MODEL ECDE CENTRE	OPEN TO ALL
	CGK/EDU/ECDE/129/24/25	KISII KWA MATHAI MODEL ECDE CENTRE	OPEN TO ALL
	CGK/EDU/ECDE/130/24/25	KIANG'OMBE MODEL ECDE CENTRE	OPEN TO ALL
GATUANYAGA	CGK/EDU/ECDE/131/24/25	MAGANJO MODEL ECDE CENTRE	OPEN TO ALL
	CGK/EDU/ECDE/132/24/25	MAGANA MODEL ECDE CENTRE	OPEN TO ALL
	CGK/EDU/ECDE/133/24/25	KOMO MODEL ECDE CENTRE	OPEN TO ALL
NGOLIBA	CGK/EDU/ECDE/134/24/25	MUKUNIKE MODEL ECDE CENTRE	OPEN TO ALL
	CGK/EDU/ECDE/135/24/25	NGOLIBA MODEL ECDE CENTRE	OPEN TO ALL
	CGK/EDU/ECDE/136/24/25	GATI-IGURU COMMUNITY MODEL ECDE CENTRE	OPEN TO ALL





Kiambu Governor Kimani Wamatangi (right) signs a dummy check to mark the launch of the county's Sh500 million annual bursary fund.

# Ksh500 million bursary now actualised in the budget

By ANN WANJIKU

Recognising the crucial role of education in the society, Governor Kimani Wamatangi's administration, has significantly increased funding for the bursary program.

This initiative aims to provide educational opportunities to underprivileged students by alleviating the financial challenges faced by many families.

For the 2024/2025 financial year, the bursary fund has been set at Ksh 500 million, benefiting over 100,000 deserving students across all 60 wards.

Each ward will see around 1,800 students receiving allocations ranging from Ksh5, 000 to Ksh10, 000. Additionally, students in particularly dire financial situations will receive full scholarships to support their entire education journey.

Like it happened in the last financial year, this increased funding is expected to lead to higher school retention rates and a notable rise in students pursuing technical skills training.

Recalling how the County bur-

sary has assisted her, Mary Muikia, a single mother of four with a child at Ruiru Secondary School, expressed her relief, stating that the bursary has eased her burdens and allowed her son to continue his education.

CECM for Education, Gender, Culture and Social Services, Ms. Nancy Gichungwa, emphasises that this initiative is part of a broader effort to improve educational outcomes and promote equity across the county.

"By enhancing the bursary fund, the county aims to create a more inclusive educational environment where every student has the opportunity to pursue their dreams," says Gichungwa.

In response to the growing demand for skilled professionals, the county also plans to construct 15 state-of-the-art vocational training centres (VTCs) across the 12 sub-counties, complementing the existing facilities.

These VTCs will be equipped with modern tools and equipment, offering hands-on experience that will help in bridging the mismatch between the industry needs and



Vocational Training and Social Services, Chief Officer, Emily Nkoroi.

training.

Additionally, the county will renovate and upgrade existing VTCs to meet current industry standards, equipping the VTCs with modern machinery and capacity building of Board of Governors (BoG), VTC principals and instructors.

This is with an aim of creating a conducive training environment for implementation of quality and rel-

evant training that meets the current industry standards and fosters skill development.

Four VTCs will have cabro sheds installed, along with cabro-making machine for the purpose of training the youth on cabro block making. Trainees will produce cabro blocks for beautification of county towns which will in turn bring extra income to the institution as an in-

come generating activity.

Ms. Emily Nkoroi, acting Chief Officer for Vocational Training and Social Services, highlighted that this initiative is expected to significantly impact the community by equipping youth with job market skills, thereby reducing unemployment.

"The county envisions a future where vocational education is a cornerstone of regional development," she says.

According to Nkoroi, the county also plans to integrate persons with disabilities into vocational training centres, ensuring they are empowered and fully included in opportunities.

"To this end, new VTCs will be designed to be disability-friendly, removing barriers to education for differently-abled individuals," the Chief Officer said.

These efforts demonstrate the county's commitment to the future of its youth by addressing immediate financial concerns and fostering a culture of support and investment in education.

## FEEDBACK FROM READERS

We would like to extend our gratitude to Governor Wamatangi for his exemplary leadership and commitment to the development of Kiambu County. Under his administration, we have witnessed tremendous strides, particularly in recognising and empowering the youth. His recent hosting of the Youth Symposium at the County Headquarters is a clear indication of his commitment to promoting a brighter future for the young people of Kiambu.

The symposium, which brought together youth from all corners of the county, was a phenomenal success. It offered a unique platform for young people to showcase their talents and skills while engaging in valuable

networking opportunities with their peers. The event, graced by the popular Obinna Show, allowed Governor Wamatangi to seamlessly connect with the youth in an exciting and interactive manner. His genuine interest in the contributions of the young people was not only inspiring but also motivating for the many who are making Kiambu proud.

The experience was electrifying, and the energy in the air was palpable. For the youth, this was more than just an event—it was a chance to be heard, seen and valued. We are excited about the possibilities that lie ahead and would love to see this become an annual event, creating a tradition where young people can come to-

gether, share ideas and drive the future of our county forward.

As young people of Kiambu, we are eager to continue working with Governor Wamatangi's administration, fully committed to ensuring that our county prospers. Together, with a united vision, we can build a future that not only uplifts the youth but also positions Kiambu as a leader in innovation, talent and progress. Thank you, Governor Wamatangi, for championing the youth and we look forward to more impactful engagements in the future.

Antony Muiruri, Kamenu Ward

The County Government of Kiambu deserves high commen-

ment's decision to embrace solar energy reflects a forward-thinking approach, demonstrating their commitment to providing uninterrupted service to the people while also contributing to environmental conservation. We are excited to see how this project will transform public lighting across Kiambu, ensuring fully operational street lights that are independent of grid electricity. This is undoubtedly a move in the right direction, positioning Kiambu as a leader in green energy adoption. The benefits of this initiative will be far-reaching, from cost savings to environmental protection and we look forward to the continued success of the project in making the county brighter and greener for all.

This shift to renewable energy is an exciting development for the county. With solar lighting, the streets will remain well-lit, enhancing security and convenience for residents without the looming threat of disconnection by Kenya Power over electricity charges. The County Govern-

ment's decision to embrace solar energy reflects a forward-thinking approach, demonstrating their commitment to providing uninterrupted service to the people while also contributing to environmental conservation.

We are excited to see how this project will transform public lighting across Kiambu, ensuring fully operational street lights that are independent of grid electricity. This is undoubtedly a move in the right direction, positioning Kiambu as a leader in green energy adoption. The benefits of this initiative will be far-reaching, from cost savings to environmental protection and we look forward to the continued success of the project in making the county brighter and greener for all.

Jason Omondi, Biashara Ward



# Roads department among key priority areas for Wamatangi in 24/25 budget

By MARION KANARI

The County Government has allocated Ksh1.72 billion to develop county transport and public utilities infrastructure for the 2024/2025 financial year under the Department of Roads, Transport, Public Works and Utilities.

The money will focus on improving key transport infrastructure across the county, including bridges, footbridges, bus parks, solar streetlights, access roads and drainage works.

Some Ksh 300,543,249 has been allocated to grading, graveling and compaction of 1,000 kilometres of access roads complete with drainage works, while Ksh145 million is set to construct six bus parks which are OJ, Kiganjo, Kimende, Dagoretti and rehabilitate existing Thika main Bus park.

The budget will also be used to complete ongoing construction of Banana Bus Park, Githiga, Kwa Maiko and Kwambira. Two main garages sheds and 38 modern market stalls are also being constructed at the new Kwambira bus parks that will be allocated to existing traders for free.

Another Ksh 80Million will be used by the directorate of roads to construct five motorable bridges of Mariguiti – Gituamba in Kiganjo ward, Gwa Gatimu bridge in Ndarugo ward, Canaan bridge connecting Theta and Gatongora wards and complete ongoing construction of Kahawa Wendani – Kiuu River bridge in Ruiru.

In another vote, Ksh 400 Million has been allocated to commence installation of solar streetlights and flood lights this month while routine maintenance and servicing of existing lights has been allocated Ksh 24 Million.

To purchase specialised plant, equipment and machinery to im-

prove the current existing road and utilities maintenance units about Ksh 75 million has been set aside.

According to the Chief Officer in charge of Roads Mr. Edmund Njihia, 17 roads maintenance units are already rehabilitating access roads in all the municipalities comprising of tippers, excavator, grader, compact roller, back hoe and water bowser.

"Vast areas such as Lari, Ruiru, Juja, Limuru and Thika have each two revolving road construction units," says Njihia.

Data from the department indicates that over 1.100 kilometres of road was rehabilitated across the

county.

In Lari, which for long has grappled with poor road networks, the regional government has graded 68 kilometres of road and gravelled 28.20 kilometres, while in Gatundu North, which also had deplorable road infrastructure, Wamatangi has graded 64 kilometres and gravelled 24.30 kilometres.

Juja Sub County has 122 kilometres graded and 60 kilometres gravelled, while Thika has a total of 98 kilometres and 67 kilometres gravelled, and in Limuru, 68 kilometres have been graded and 24 kilometres gravelled.

Gatundu South (46 km graded and 22 km gravelled), Ruiru (46 km graded and 34 km gravelled), Githunguri (42 km graded, 24 km gravelled), Kiambu Township (46 km graded and 26.9 km gravelled), and Gatundu South (46 km graded and 22 km gravelled)

Governor Kimani Wamatangi's administration has been enhancing public transport infrastructure since taking office to ensure smooth connectivity and accessibility, safety and security of the public through rehabilitation of existing bus parks and construction of others to decongest and keep up with population growth.

During the previous financial year, three Major bus parks of Makongeni, Kiambu and Lower Kikuyu town have been modernised while Banana town Bus Park, Kwambira, Githiga town and Kwa Maiko are under construction.

Design and construction of OJ, Kiganjo, Kimende, Dagoretti and rehabilitation of existing Thika main Bus Park will commence under this financial year.

The Department of Roads, Transport, Public Works and Utilities is committed to improve public transport and utilities infrastructure to spur economic growth.



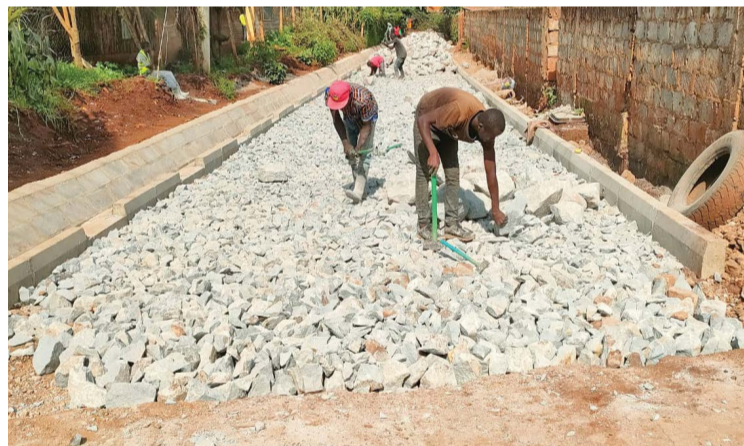
**17 roads maintenance units are already rehabilitating access roads in all the municipalities comprising of tippers, excavator, grader, compact roller, back hoe and water bowser.**  
**Mr. Edmund Njihia**  
**Chief Officer Roads**



Ongoing construction of Ha-Mwenjera- Muthandi Primary School- Kambi ya Ihi access Road in Kamburu Ward, Lari Sub-county.



Construction of Kiuu Kenda road Township Ward, Kiambu.



Construction of access to Kikuyu Police Station Road.



Tarmacking of Ondiri Road in Kikuyu.



# Pictorial



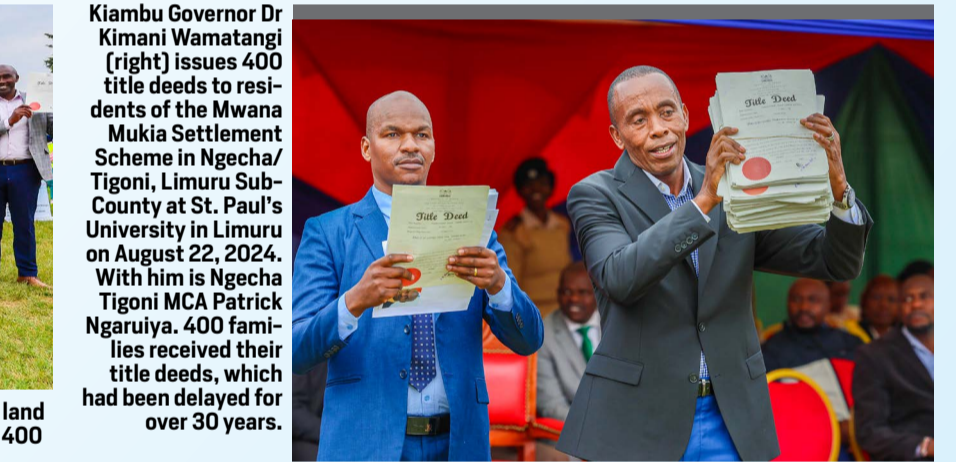
Over 8,000 farmers from Kijabe Ward, Lari Sub-County received certified maize seeds and fertilizer.



Humanitarian assistance to families whose homes were destroyed in a fire at the Miroko area in Njiku, Karuri Ward in Kiambaa Sub-County.



Women in Kihara, Kiambaa sub-county walk home after receiving improved kienyeji chicks.



Kiambu Governor Dr Kimani Wamatangi (right) issues 400 title deeds to residents of the Mwana Mukia Settlement Scheme in Ngecha/Tigoni, Limuru Sub-County at St. Paul's University in Limuru on August 22, 2024. With him is Ngecha Tigoni MCA Patrick Ngaruiya. 400 families received their title deeds, which had been delayed for over 30 years.



Installation of solar street-lights at Gitambaya area in Biashara Ward, Ruiru Sub-County



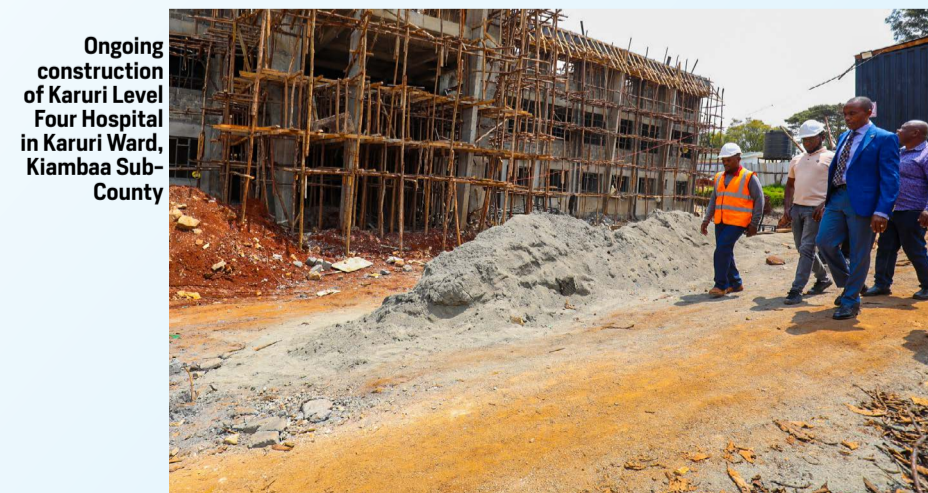
Landowners of Mwana Mukia in Kabuku in Ngecha, Limuru after they received title deeds for their land from Kiambu Governor Kimani Wamatangi at St. Paul's University in Limuru on August 22, 2024. 400 families received their title deeds, which had been delayed for over 30 years.



Governor Kimani Wamatangi acknowledges greeting from the people at Magina in Kijabe Ward, Lari where distributed certified maize seeds and fertilizer to over 8,000.



Ongoing construction of Githiga modern bus park in Githiga Township, Githunguri Sub-County.



Ongoing construction of Karuri Level Four Hospital in Karuri Ward, Kiambaa Sub-County



Governor Kimani Wamatangi during a visit to Gatundu Level 5 Hospital, a facility that has grown significantly through the county partnership with Kenyatta University Teaching, Referral, and Research Hospital (KU



# Pictorial



Kiambu Governor Kimani Wamatangi in a meeting with Devolution Secretary Teresia Mbaika Malokwe and County Secretary Peter Ndegwa where they discussed how Ksh Sh100 million under the Kenya Devolution Support Program (KDSP) One, will be used to finish Wangige Level Four Hospital in Kabete Sub-County.



From Left; Nation Media Group Acting CEO Richard Tobiko, Kiambu Governor Dr. Kimani Wamatangi and Kenya National Library Services CEO Charles Nzivo, after signing an MOU at the Kiambu County Headquarters, between the County Government of Kiambu, Nation Media Group Foundation, and Kenya National Library Services for the construction of a modern county library and resource center at Ngewa in Githunguri Sub-County.



Governor Kimani Wamatangi and Karuri MCA Peter Wainaina inspecting the ongoing construction of Karuri Buspark in Banana Township in Karuri Ward, Kiambaa Sub-County.



The County Government of Kiambu rehabilitated and fully equipped 15 ambulances



The interior of one of the 15 ambulances that were rehabilitated and fully equipped by the County Government of Kiambu

Governor Kimani Wamatangi acknowledges greetings from residents of Sigona, where we distributed certified maize seeds, fertilizer, improved kienyeji chicks, and hass avocado seedlings to over 4,000 farmers





Commissioned a water project in Kimende, Kijabe Ward



# Substantial resources set aside for provision of water in Kiambu

By ESTHER KIHANYA

The County has earmarked a substantial Ksh1.12 billion to bolster water, sanitation infrastructure and environmental conservation efforts in the 2024/2025 Financial Year.

The Water and Sanitation Directorate has identified key areas for investment in this fiscal year.

Resources will go towards sinking boreholes, solarisation of water projects, rehabilitating some water projects as well as installation of water networks across the county.

Governor Kimani Wamatangi's administration has prioritised water under the "Maji Nyumbani" programme that is tailor made to ensure that this essential commodity reaches to residents.

Some of the projects in the pipeline include Gatitu, Nduriri, Nyathuna, Uthiru, Ngenda, Kikuyu, Limuru East, Kihara, Chania among others.

Plastic water tanks mounted on elevated steel platform are also set to be

installed in different locations across Kiambu.

Environmental conservation is also a major focus, with funds allocated for equipment to manage rivers, wetlands and water catchment areas.

The county also plans to develop public parks and green spaces. There are plans to secure seeds, tree seedlings and nursery tools, while Hass avocado seedlings and potting bags are also part of the budget.

CEC Member for Water, Environment, Natural Resources, Energy and Climate Change David Kuria says the department is ready to implement this year's plan.

"Our efforts include Sustainable Land Management through soil and water conservation in various areas. We are also improving climate resilience in our slaughterhouses," Kuria stated.

The Chief Officer in the Department Jennifer Musyoki highlighted the importance of environmental projects.

"We are enhancing the fisheries value chain with an allocation for sola-

rising cold rooms and distributing fish cages. Additionally, we are investing in rainwater harvesting and riparian area conservation for agro forestry and storm water management," Musyoki noted.

The budget also includes funds for establishing a Climate Change and Energy Resource Centre and an allocation for an automatic weather station.

In the last financial year, the made significant strides in water accessibility, environmental management and infrastructure development.

The department initiated new boreholes in key areas, with plans to integrate solar power, enhancing water distribution to densely populated regions.

Additionally, 228 kilometres of pipelines were delivered to extend water services countywide.

Ms Musyoki said the use of solar power in water projects had helped in reducing costs and promoted conservation.

The department also rehabilitated



**"Our efforts include Sustainable Land Management through soil and water conservation in various areas. We are also improving climate resilience in our slaughterhouses," CEC Member for Water, Environment, Natural Resources, Energy and Climate Change David Kuria**

and branded public sanitation facilities, constructed new ones, and improved storm water drainage.

The Directorate of Environment and Waste Management enhanced waste management infrastructure, including installing a weighbridge at Kang'oki landfill and fabricating waste bins.

In natural resources, the county established tree nurseries, mapped riparian areas, and promoted sustainable practices.

The Directorate of Energy and Climate Change developed a County Energy Plan and secured Ksh 99 million through the FLLoCA Program for climate action, working closely with local communities to prioritise projects aimed at building climate resilience and addressing environmental challenges.

Through these comprehensive efforts, Kiambu County aims to significantly enhance its water infrastructure, bolster environmental sustainability, and effectively address climate challenges.



Inspection of the ongoing Makutano Primary School Community borehole Project in Ndeiya Ward, Limuru Sub-County



Launch of the Njiku borehole project in Karuri Ward, Kiambaa Sub-County.



# Pigs, heifers part of this year's farmer's empowerment programme

The Department of Agriculture aims to build on its achievements from the last financial year with a range of programmes designed to support farmers at the grassroots. The highly successful Farmers Empowerment Programme, which has reached farmers in all 60 wards, is set to expand in the 2024/2025 financial year, with increased resources allocated to the project.

The distribution of improved Kienyeji chickens, known for their superior egg-laying capabilities and faster growth rates, will continue, with nearly 250,000 chicks to be distributed to women.

This year, Governor Kimani Wamatangi's administration is introducing the distribution of piglets to empower young men. The department also plans to procure and distribute heifers to farmers, taking into account Kiambu County's leadership in milk production. This initiative aims to empower youth, men and women who are passionate about dairy farming but face some limitations.

The department will also continue distributing certified maize seeds and fertiliser, with 33 tonnes of certified seeds and over 1,800 tonnes of fertiliser set to be distributed to farmers across all wards.



This year, Governor Kimani Wamatangi's administration is introducing the distribution of piglets to empower young men. The department also plans to procure and distribute heifers to farmers, taking into account Kiambu County's leadership in milk production

As fruit farming gains traction in Kiambu, Governor Wamatangi's government is committed to increasing the distribution of certified fruit seedlings, including avocado, mango, oranges, pawpaw and others. For farmers in the county's drier regions, the government has considered their needs by distributing drought-resistant cassava cuttings to boost food security.

These initiatives are designed to benefit women, men and youth across the county, with a focus on livestock farming, crop production and cooperative support. One key initiative is the expansion of the Poultry Program, which has been instrumental in empowering women farmers. Over the past two years, the program has distributed 410,000 chickens, and this year, an additional 240,000 chickens will be provided.

"This effort is expected to significantly boost poultry production and improve the livelihoods of women farmers throughout the county. The county is also focusing on pig farming through the Pig Program, targeting men and youth," said the acting Agriculture CEC, Mr. David Kuria.

In this financial year, the department plans to procure 15,000 three-month-old piglets, which will be distributed to men and youth groups engaged in pig farming, providing them with a profitable venture that can contribute to the county's economic growth.

Recognising Kiambu County's leading role in milk production, the department is further enhancing dairy farming through the Heifer Program. The county will distribute high-quality heifers to support youth, men and women interested in dairy farming, aiming to improve milk production and provide a sustainable livelihood for the beneficiaries.

Cassava, a drought-resistant crop, is crucial for food security and can thrive in varying climatic conditions, making it an important addition to the county's agricultural efforts. Lastly, the county is committed to strengthening local cooperative societies by supporting 60 SACCOs with inclusion grants and matching grants through the National Agricultural Value Chain Development Project. Each ward will benefit from this initiative, which aims to enhance the financial capacity of SACCOs and enable them to better serve their members.

These comprehensive programs demonstrate Kiambu County's dedication to advancing agriculture, supporting local farmers, and enhancing food security. The initiatives are expected to have a profound impact on residents' livelihoods and contribute significantly to the county's overall economic development.

Commissioned the construction of Kimbo-Matangi-Ini Junction Market in Theta Ward in Juja Sub County.



# Construction of markets, modern kiosks, bodaboda sheds in full swing

By NJERI KARU

As one of the key pillars in delivering on Governor Kimani Wamatangi's promises, the Department of Trade, Industrialization, Tourism and Investments has been allocated over Ksh 1.8 billion for the 2024/2025 financial year.

A significant portion of this amount will be used to construct more than 20 markets for small-scale traders across the county, as the Wamatangi administration seeks to support those at the bottom of the economic pyramid.

In addition to markets, the department is also establishing modern kiosks, bodaboda sheds and shoe-shine booths as the Governor works to implement the Bottom-Up Economic Model championed by President William Ruto.

The department intends to implement more projects among them construction of new markets including Githiga and Karia markets in Githunguri Sub county as well as Kamburu and Kimende in Lari sub county.

Others in the pipeline include Muchatha in Kiambaa Sub county, Gatiri in Kiambu Sub county, Ndeiya in Limuru sub county, Kiamwangi, Mataara, Gakoe and Gituamba markets in Gatundu North sub county, Juja farm, Kirae and Utugi markets in Juja sub county.

Also set for construction are Kairi, Maguguni, Ngoliba and Kiandutu in Thika sub county, Ngarariga and Kamangu in Limuru sub county and Mundoro market in Gatundu south sub county. Rehabilitation of Karuri market in Kiambaa Sub County and Limuru-Rongai market by fixing downpipes and stone pitching the market sites is also on the cards.

These facilities will benefit over 5,000 traders and will not only enhance trading activities for small scale traders but will also boost the county's economy by attracting more investments and creating employment opportunities.

"Kiambu is poised for a transfor-



We are investing heavily to see traders get better spaces to conduct their businesses as they are major contributors of the growth of our economy  
Trade, Tourism, Industries & Enterprise Development, CECM, Susan Gatwiri

native change with plans to construct these markets hence the county government is investing heavily to see traders get better spaces to conduct their businesses as they are major contributors of the growth of our economy," says Susan Gatwiri, the CEC for Trade.

She adds: "the markets will contain solar powered lights, enhancing trading and improving security as well as extending business hours, administration offices, ablution blocks which will improve sanitation while preventing waterborne and hygiene related diseases, a garbage pit among others."

Among other projects scheduled are construction of 400 modern kiosks and market stalls in different towns, markets, bus parks. Some kiosks are being built around Thika stadium courtesy of the Department of Youth and Sports.

Construction of modern shoe shine booths each in every ward, modern carwash bays in different areas is also part of the projects to be carried out in this Financial Year. There is also the construction of jua Kali sheds and bodaboda sheds across the county.

The Chief Officer in charge of Trade Mr. Simon Kiberenge said once completed, the well identified projects would be a boon to the county.

"I am pleased with what the department did in the last fiscal year and what it intends to do in this financial year and the outstanding thing is the livelihoods improvement aspect of the people in this county and enhancing trade as envisioned by the department's agenda," he said.

He said apart from benefitting the traders, who will occupy the markets; the projects have created employment to the youth.

"We will ensure that labour has been sourced from the locals to give opportunities to the young people and that the projects are executed with precision and accountability," said Kiberenge.



# County secures land title deeds for settlement schemes, informal settlements



Title Deeds issuance to residents from Mwanamukia Settlements Scheme in Ngecha-Tigoni, Limuru Sub-County.

By **MAROA ENOCK**

**G**overnor Kimani Wamatangi's administration is taking bold steps to improve the lives of its residents by securing land ownership for settlers across the county.

The Department of Lands, Housing, Physical Planning, Municipal Administration and Urban Development has carefully planned to issue approximately 10,000 land title deeds to those living in settlement schemes and informal settlements.

This will bring significant changes, giving residents the security of land ownership and helping to improve their living conditions and economic opportunities.

A major part of this effort is the partnership with the Second Kenya Informal Settlement Improvement Project (KISIP 2).

Together with KISIP 2 consultants, the County Government has conducted detailed surveys in five informal settlements that include Kiandutu, Matharau, Kanjeru, Kiroe and Kiamburi.

This initiative is expected to produce over 4,900 land titles, giving the residents of these settlements much-needed security over their land.

"This programme is not just about issuing title deeds, it is about changing lives. By securing land ownership, we are giving our people the tools to unlock their potential. This allows them to invest in their land,



"This programme is not just about issuing title deeds, it is about changing lives. By securing land ownership, we are giving our people the tools to unlock their potential. This allows them to invest in their land, build permanent homes and improve their overall quality of life," **Ms Salome Wainaina, the County Executive Committee Member in charge of Lands, Housing, Physical Planning, Municipal Administration and Urban Development**



build permanent homes and improve their overall quality of life," noted Ms Salome Wainaina, the County Executive Committee Member in charge of Lands, Housing, Physical Planning, Municipal Administration and Urban Development.

According to Ms Wainaina, the KISIP program goes beyond just formalising land ownership as it also focuses on improving infrastructure and supporting economic empowerment in the areas, leading to better living conditions for the residents.

The county's KISIP Coordinator Mr Julius Mwololo explained the broader impact of the programme.

"Land ownership is a foundation for development. By formalising land ownership, we not only give residents a sense of security but also lay the groundwork for sustainable economic growth," said Mwololo.

In addition to these efforts, the County Government has plans to formalise land ownership documents for residents in community settlement schemes.

Some schemes, like the Mwanamukia Settlement Scheme in Limuru Municipality, have already seen progress, with 500 title deeds issued last month.

This marked a crucial milestone in the county's efforts to regularise land ownership.

At the title issuance ceremony, Ms Wainaina said: "We are committed to extending these benefits to

other settlement schemes across the county and ensuring that every resident enjoys the security and pride that comes with formal land ownership."

The county is also planning land verification and validation in other settlements, including Githunguri Ranching in Ruiru where verification exercise took place last month, Ndeiya Karai, Karai/Karai open Space, Nachu/Ndacha Township, among others.

These efforts underscore the county government's dedication to providing secure land ownership and promoting further development.

While issuing title deeds at the Mwanamukia settlement scheme, Governor Wamatangi said the priority is of his administration was to facilitate formalisation of land ownership in different schemes.

"We are committed to ensuring that every resident in our settlement schemes secures their rightful land documents. We cannot allow our people to live like squatters on land they rightfully own," said the Governor.

By providing the title deeds, he said, the County was empowering the owners to fully utilise their property and contribute to the overall development of Kiambu.

"This is more than land ownership. It is about dignity, security and the future of our people," said Governor Wamatangi.





H.E Governor Dr. Kimani Wamatangi presents certificate during a colourful ceremony that marked the graduation of 127 trainees from a 6 day intensive Film Capacity Building Workshop held at Kiambu County Headquar.

# Ksh 40M Kiambu County Enterprise Development Fund set to be unveiled

By **DUNCAN OJIO**

In a bid to boost financial empowerment for Kiambu residents, Governor Kimani Wamatangi's administration, through the Department of Youth Affairs and Sports, is launching the Kiambu County Enterprise Development Fund (KCEDF).

This fund aims to provide affordable, low-interest financial support to local entrepreneurs, helping to drive economic growth while ensuring that everyone in the community is included.

Earlier this year, a technical committee was formed to assess the fund's feasibility. They conducted a study, gathering insights from 1,200 businesses within the county through questionnaires.

The committee also held focus group discussions with key stakeholders, including financial institutions, business associations and national government funds like



The People's Bank is designed to empower entrepreneurs and small business owners, contributing to economic development and job creation.

**Osman Korar, CECM Youth, Sports and Communication**



the Hustler's Fund, Youth Enterprise Development Fund and Women Enterprise Fund.

To avoid repeating past mistakes, the committee researched established funds in other counties like Makeni, Laikipia, Meru, Nakuru, Kericho and Kisumu by interviewing their management teams.

The study outlined key components and strategies needed for the fund's success. The report, along with recommendations, has been presented to the cabinet for approval. Once approved, a bill will be drafted and presented to the assembly. If passed, the bill will be enacted into law, allowing the fund to become operational.

For the 2024/2025 financial year, Ksh 40 million has been allocated to the fund. The fund will offer both digital and manual application options, enabling applicants to apply for loans either through a USSD code or by submitting applications manually at designated locations. The fund targets youth, women, differently-abled individuals, and other vulnerable groups within Kiambu County.

The CECM for the Department of Youth Affairs, Sports and Communication, Ali Osman said once the fund is rolled out, residents will be able to receive start up capital for their businesses.

Osman said the county had already taken due diligence procedures to ensure that the programme will be successful and reach the intended beneficiaries.

"The Kiambu County Enterprise Development Fund is a crucial initiative that will provide much-needed financial support to our residents. It is designed to empower entrepreneurs and small business owners, contributing to economic development and job creation. This fund is an important step towards fostering a more inclusive and sustainable economic environment in Kiambu County," he said.

The CEC observed that most of the youth had the technical know-how on how to start income generating ventures but were constrained by lack of startup capital.

He noted that the initiative represented a significant investment in the county's future, aimed at strengthening local businesses and creating opportunities for all residents.

**Kiambu Governor Dr. Kimani Wamatangi presents a dummy cheque of Kshs. 200,000 to Gitothua Youth Bunge during the Kiambu County Youth Day celebrations at the county headquarters.**



Youth Affairs, Sports and Communication, Ali Osman conducting a ten day training in digital skills, digital marketing and entrepreneurship for over 100 participants at Ndumberi Stadium.



Youth Affairs, Sports and Communication, Ali Osman presents certificate during the Kiambu County Sports Management and Leadership Workshop at the Ndumberi Youth Empowerment Center in Kiambu Sub-County.



## COUNTY SPORTS

# Sports facilities' upgrade tops priorities in 2024/2025 financial cycle

By **DUNCAN OJIJO**

To enhance the sporting facilities in Kiambu, Governor Kimani Wamatangi has set aside Ksh 130 million to continue with the rehabilitation of different stadiums across the County.

In a continuation of works that started in the last financial year, in the year 2024/2025 the Department of Sports aims to pick up from where it left when the fiscal year drew to a close.

The department has been diligently working to fulfill Governor Wamatangi's top pledge to the sports community, which is, the development of infrastructure. Progress is steadily being made through the upgrading and renovation of stadiums and playing fields across Kiambu County.

Mr. Ali Osman, CECM for the Department of Youth Affairs, Sports, and Communication said the department was committed to fulfilling its part of the bargain this financial year.

He said this year would see a significant improvement in the sports infrastructure across the county as the county government moves to provide a conducive environment for the youth to thrive in sports and entertainment.

"The ongoing stadium infrastructure improvements are vital for the development of sports in Kiambu.

This will provide better venues for local events and also create opportunities for our youth to engage in sports at a higher level. This investment will play a key role in nurturing and showcasing local talent," said Osman.

Director of Sports Catherine Nduati elaborated on the department's plans: "In the 2024/2025 financial year, our focus is on creating top-tier sports facilities that will support both local and international events."

She said the upgrades are crucial for the development of our youth, offering them world-class facilities to train and compete.

"Our goal is to provide a platform that fosters talent and promotes Kiambu as a hub for sporting excellence," she said.

Several fields and playgrounds are already seeing improvements.

For example, Kagwe Stadium in Lari Sub-County is nearing completion, with fencing, leveling, and ground compaction already finished. Last month, Governor Wamatangi visited Kagwe Stadium to oversee the grass planting process. He praised the project's progress and assured the public that his administration would ensure the field is well-maintained and rehabilitated.

The renovation of Thika Stadium is progressing smoothly.

Eight months after Governor Wamatangi's groundbreaking ceremony,



**TOP: Construction of a basket ball court at Thika Stadium INSET: Ongoing renovations at Thika Stadium**



stand is now 95 percent complete. This upgrade aims to increase the stadium's capacity for spectators at football matches and recreational activities.

In addition, over 300 stalls are being constructed, with nearly 100 stalls nearing completion in the first

phase. These stalls will be allocated for free to traders on a first-come, first-served basis. A new basketball court is also underway, currently about 40 percent complete, while volleyball and netball courts have been finished.

For swimmers, space is being cleared for the construction of a competitive swimming pool which will have the capacity of hosting national swimming events.

In the financial year 2024/2025, the department plans to continue this momentum with the goal of establishing at least five state-of-the-art stadiums capable of hosting international events and showcasing Kiambu County's sports talent. The upcoming projects include:

**Kanjeru Stadium:** Once completed, it will feature two football fields—one for training and the main field equipped with a standard running track, spectator stands, two tennis courts, and a basketball court.

**Githunguri Stadium:** Fencing is nearly finished, with upcoming construction to include spectator stands, volleyball and basketball courts, and surrounding stalls.

**Thigio Grounds:** The project will include an eleven-a-side football pitch with AstroTurf, an athletics track, and a dias.

**Thika Stadium Phase Two and Ruiru Stadium:** Both are included in this year's budget for further development.

Furthermore, the department plans to improve local facilities under the "one field per ward" initiative, focusing on leveling Mwirigo and Kairi primary grounds both in Gatundu North and upgrading BTL Ground and Githurai playing field in Ruiru Sub-County.

## Governor Wamatangi revives construction of Kirigiti youth amphitheatre

By **DUNCAN OJIJO**

The County Government of Kiambu has revived construction of an amphitheatre at Kirigiti Stadium that is expected to rejuvenate the creative and professional opportunities available to the youth.

The Department of Youth and Sports has allocated Ksh. 13 million in its 2024/2025 financial year to fund completion on the facility as part of Governor Kimani Wamatangi's administration initiatives to fostering a vibrant cultural and artistic community in the county.

Originally intended to serve the youth of Kiambu, the project which was launched in 2016, has remained dormant for years over nonpayment of pending bills, leaving behind only a shell of what was meant to be a beacon for the youth of Kiambu engaged in theater and performing arts.

On completion, the amphitheater will serve as a comprehensive youth center, providing access to government information, a music studio for recording, a theater for training and performances, and an ICT hub for internet access and online business opportunities.

Maryanne Kahuno, Chief Officer for the



Department of Youth Affairs and Sports, emphasized the significance of the project.

"The completion of the Kirigiti amphitheater will offer a dedicated space for young artists to develop their skills and showcase their talents. By providing facilities such as a music studio and theater, we are creating a nurturing environment that will inspire and

support our local talent in performing arts and music," she said.

The completion of the Kirigiti amphitheater is expected to enhance the local arts scene, offering young people a venue to practice, perform, and grow.

It will also act as a catalyst for community engagement and cultural development, positioning Kiambu as a hub for creativity and innovation.